



C  
A  
T  
E  
N  
E  
S  
P  
E  
C  
I  
A  
L  
I

## INDICE

### CATENE SPECIALI

Catene trasporto speciali	41
Attacchi per catene trasporto speciali	42
Catene per l'industria del riciclaggio, perni pieni	44
Impianti riciclaggio	45
Industria alimentare	46
Elevatori verticali	54
Scale mobili	56
Tunnel autolavaggio	58
Industria auto	60
Impianti acciaierie	61
Trasporto carta	63
Trasporto tubi	64
Impianti verniciatura	66
Tunnel refrigerazione	69
Trasporto e trattamento legno	73
Asfaltatrici	77
Impianti ceramiche e refrattari	80
Trasporto frutta	82
Esecuzione speciale	83

## INDEX

### SPECIAL CHAINS

<i>Special conveyor chains</i>	41
<i>Attachments for special conveyor chains</i>	42
<i>Waste recycling industry chains</i>	44
<i>Waste recycling plants</i>	45
<i>Prover industry</i>	46
<i>Paternoster</i>	54
<i>Escalator chain</i>	56
<i>Car washing tunnel</i>	58
<i>Automotive industry</i>	60
<i>Steel industry</i>	61
<i>Paper industry</i>	63
<i>Tube conveyor plants</i>	64
<i>Painting plants</i>	66
<i>Freezing tunnels</i>	69
<i>Wood conveyor plants</i>	73
<i>Asphalt paving machine</i>	77
<i>Brick, tile refractory industry</i>	80
<i>Fruit conveyor</i>	82
<i>Special execution</i>	83

*La ROSA CATENE spa e la EUROCATENE sas declinano qualsiasi responsabilità per eventuali errori in cui possono essere incorse nella compilazione del presente catalogo e si riservano il diritto di apportare, al disegno ed alle dimensioni dei prodotti descritti, qualsiasi modifica richiesta dallo sviluppo evolutivo dei suddetti prodotti.*

*In accordance with the policies of ROSA CATENE spa and EUROCATRENE sas to constantly improve their products, the specifications in this catalog are subject to change without notice.*

## GLOSSARIO

<b>p</b>	=	Passo
<b>Hi</b>	=	Larghezza interna della maglia interna (min)
<b>Dr</b>	=	Diametro del rullo
<b>Hp</b>	=	Altezza della piastra (max)
<b>s</b>	=	Spessore della piastra
<b>Sj</b>	=	Spessore della piastra interna
<b>Se</b>	=	Spessore della piastra esterna
<b>Dp</b>	=	Diametro del perno (max)
<b>l</b>	=	Lunghezza del perno ribadito (max)
<b>lx</b>	=	Ingombro massimo sulla giunzione
<b>pt</b>	=	Passo trasversale
<b>Db</b>	=	Diametro della bussola (max)
<b>Df</b>	=	Diametro del foro del perno forato
<b>R</b>	=	Raggio minimo di curvatura
<b>L</b>	=	Larghezza dletta
<b>Dc</b>	=	Diametro cuscinetto
<b>Dps</b>	=	Diametro perno sporgente

## GLOSSARY

<b>p</b>	=	Pitch
<b>Hi</b>	=	Inside width (min)
<b>Dr</b>	=	Roller diameter
<b>Hp</b>	=	Sidebar height (max)
<b>s</b>	=	Plate thickness
<b>Sj</b>	=	Inner plate thickness
<b>Se</b>	=	Outer plate thickness
<b>Dp</b>	=	Pin diameter (max)
<b>l</b>	=	Riveted pin width (max)
<b>lx</b>	=	Maxim overall width
<b>pt</b>	=	Gauge
<b>Db</b>	=	Bushing diameter (max)
<b>Df</b>	=	Bore pin diameter
<b>R</b>	=	Minimum bending radius
<b>L</b>	=	Attachment width
<b>Dc</b>	=	Bearing diameter
<b>Dps</b>	=	Extended pin diameter



L'azienda  
**ROSA CATENE**  
è certificata  
UNI EN ISO  
9001:2000

**ROSA CATENE**  
is certified  
UNI EN ISO  
9001:2000





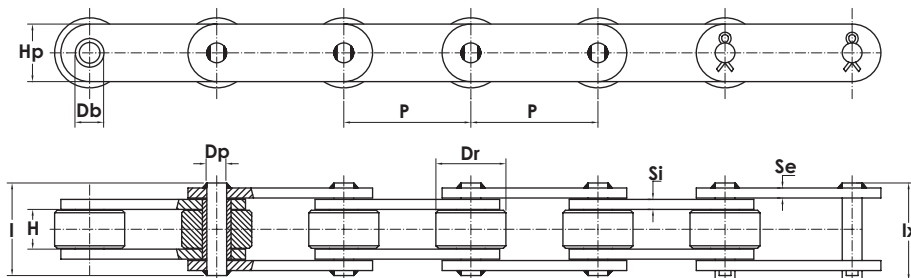


# ROSA CATENE



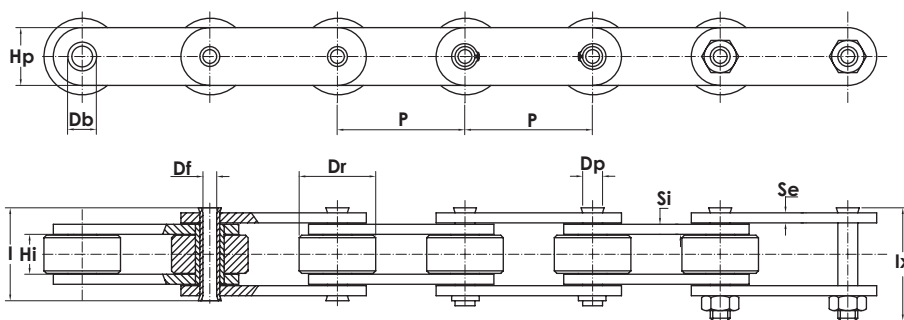
### CATENE TRASPORTO SPECIALI

SPECIAL CONVEYOR CHAINS



### CATENE SPECIALI PERNI PIENI - SPECIAL CHAINS SOLID PINS

CODICE CATENA	Dimensioni nominali			Altre dimensioni							Carico minimo di rottura Kg	Peso netto al m. Kg/m	giunto n	TRADE MARK
	passo	largh. interna min.	diam. rullo	altezza max piastra	spess. piastre int.	spess. piastre est.	diam. max perno	diam. bussola	largh. perno ribad	ingombro max				
	P mm	Hi mm	Dr mm	Hp mm	Si mm	Se mm	Dp mm	Db mm	I mm	Ix mm				
• SP7R/350 ▲	35	16,0	20,0	26,5	2,5	2,5	10,0	13,35	32	38	3.000	2,62	21	EURO CATENE
• SP7R/650	65	15,0	24,0	30,0	4,0	4,0	12,0	17,00	38	44	4.200	3,73	21	
• SP7A/662	66,27	27,5	22,5	35,0	6,0	5,0	11,50	15,88	58	63	10.000	5,75	21	
• SP7V/750	75	23,0	28,0	40,0	5,0	5,0	10,00	13,35	50	56	10.500	5,76	21	
• SP7S/762	76,2	25,0	23,0	30,0	5,0	5,0	11,45	15,24	52	58	11.000 □	4,34	21	
• SP7B/100	100	15,0	22,0	30,0	3,0	3,0	10,00	13,35	34	40	4.000	2,28	21	
• SP7C/100	100	19,0	55,0	50,0	7,0	5,0	17,90	23,75	51	58	25.000 □	10,39	21	
• SP7B/125	125	24,0	55,0	40,0	4,0	4,0	14,35	19,05	47	55	7.200	6,65	21	
• SP7O/125 Δ	125	25,4	25,0	35,0	5,0	5,0	14,00	25,00	53	59	4.200	4,21	21	
• SP7C/135	135	39,0	66,0	40,0	8,0	8,0	14,30	19,05	78	88	11.000	14,21	21	
• SP7V/150	150	32,0	31,0	50,0	7,0	5,0	14,35	19,05	63	73	16.000	7,24	21	
• SP7P/150	150	32,0	70,0	50,0	8,0	7,0	14,35	19,05	71	81	20.000	13,75	21	
• SP7C/160	160	32,0	30,0	40,0	5,0	5,0	14,35	19,05	61	71	9.000	5,06	21	



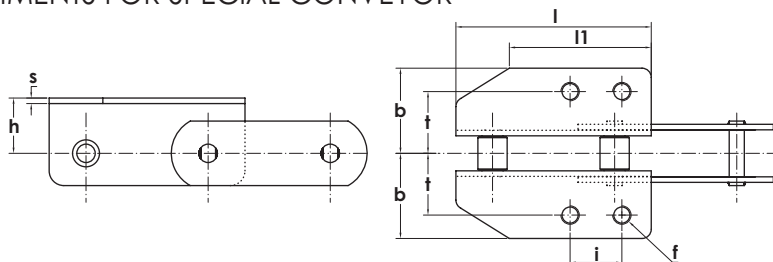
### CATENE SPECIALI PERNI FORATI - SPECIAL CHAINS HOLLOW PINS

CODICE CATENA	Dimensioni nominali			Altre dimensioni							Carico minimo di rottura Kg	Peso netto al m. Kg/m	giunto n	TRADE MARK	
	passo	largh. interna min.	diam. rullo	altezza max piastra	spess. piastre int.	spess. piastre est.	diam. max perno	diam. foro perno	diam. bussola	largh. perno ribad					ingombro max
	P mm	Hi mm	Dr mm	Hp mm	Si mm	Se mm	Dp mm	Df mm	Db mm	I mm					Ix mm
• SP9B/500PF	50	15,0	20	30	4	4	13,35	10,20	17,0	36,5	52	3.200	3,12	26-27	EURO CATENE
• SP9R/550PF Δ	55	22,0	18	30	4	4	14,00	10,20	18,0	42,0	58	4.000	3,14	26-27	
• SP9R/551PF Δ	55	25,0	24	40	5	5	18,00	12,10	24,0	51,0	71	7.000	6,03	26-27	
• SP9R/650PF	65	15,0	24	30	4	4	13,35	10,20	17,0	36,5	52	3.200	3,08	26-27	
• SP9K/100PF	100	15,0	25	35	4	4	13,35	10,20	17,0	36,5	52	4.800	3,27	26-27	
• SP9N/125PF	125	25,4	55	50	7	5	25,40	19,20	32,0	58,0	79	10.500	9,12	26-27	
• SP9M/150PF	150	17,0	40	35	4	4	19,05	13,35	25,4	38,0	58	3.200	3,46	26-27	

▲ Catena con piastre a profilo sagomato / Chain with shaped plates  
 □ Carico di rottura per catene con piastre trattate / Breaking load with heat treated plates  
 Δ Catena a bussola / Bush chain

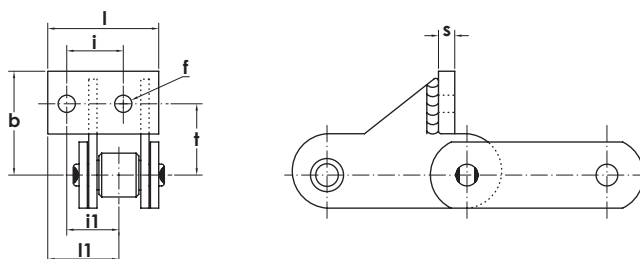
## ATTACCHI PER CATENE TRASPORTO SPECIALI

ATTACHMENTS FOR SPECIAL CONVEYOR



### TIPO FRESANTE

CODICE CATENA	Passo	Dimensioni								Sovrappeso unitario approssimato attacco
		altezza aletta	lunghezza aletta	lunghezza piano	diam. fori aletta	interasse trasvers. fori	interasse trasvers. aletta	interasse longitud. fori	spessore aletta	
	p mm	h mm	l mm	l <sub>1</sub> mm	t mm	t mm	b mm	i mm	s mm	S-2 Kg
• <b>SP7A/662</b>	66,27	30	106	77	10MA	33,5	46,2	28,1	6	0,317

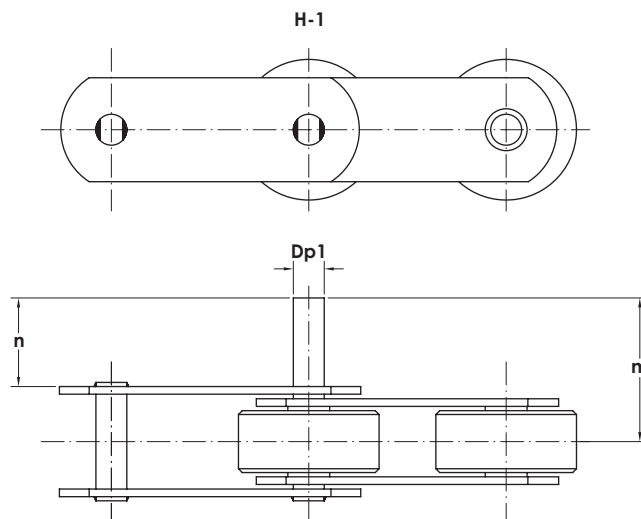


### TIPO SPINTORE - PUSHING TYPE

CODICE CATENA	Passo	Dimensioni								Sovrappeso unitario approssimato attacco
		interasse verticale fori	altezza attacco	lunghezza attacco	disassamento attacco	diam. fori attacco	interasse fori	disassamento fori	spessore	
	p mm	t mm	b mm	l mm	l <sub>1</sub> mm	f mm	i mm	l <sub>1</sub> mm	s mm	Kg
• <b>SP7A/662</b>	66,27	32,5	51,5	69,6	44,2	10,5	35,2	32,0	8,2	0,286

### TIPO H-1 - TYPE H-1

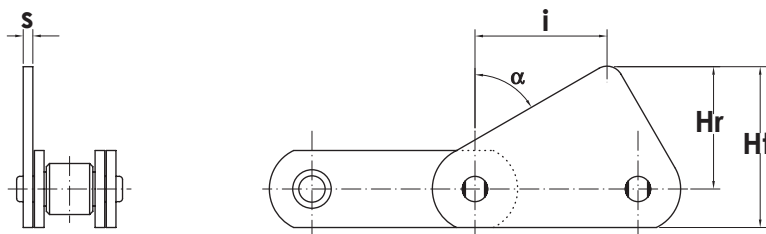
CODICE CATENA	Dimensioni			Sovrappeso unitario approx attacco
	diam. perno sporgente	sporgenza da centro catena	sporgenza da piano piast. est.	
	Dp <sub>1</sub> mm	m mm	n mm	H-1 Kg
• <b>SP7R/350</b>	10,00	48,5	35,0	0,020
• <b>SP7R/650</b>	12,00	56,0	40,0	0,034
• <b>SP7A/662</b>	11,50	55,3	30,0	0,023
• <b>SP7V/750</b>	10,00	52,0	30,0	0,017
• <b>SP7S/762</b>	11,45	53,0	30,0	0,022
• <b>SP7B/100</b>	10,00	34,0	20,0	0,011
• <b>SP7C/100</b>	25,00	62,0	40,0	0,141
• <b>SP7B/125</b>	14,35	60,5	40,0	0,046
• <b>SP7O/125</b>	15,00	76,2	53,0	0,069
• <b>SP7C/135</b>	14,30	86,0	50,0	0,057
• <b>SP7V/150</b>	14,35	58,5	30,0	0,035
• <b>SP7P/150</b>	14,35	71,5	40,0	0,046
• <b>SP7C/160</b>	14,35	66,5	40,0	0,048



N.B. Attacchi con misure Dp<sub>1</sub>, m, n, diverse da quelle indicate possono essere forniti a richiesta/ On request, attachments with different dimensions Dp<sub>1</sub>, m, n, can be supplied

## ATTACCHI PER CATENE TRASPORTO SPECIALI

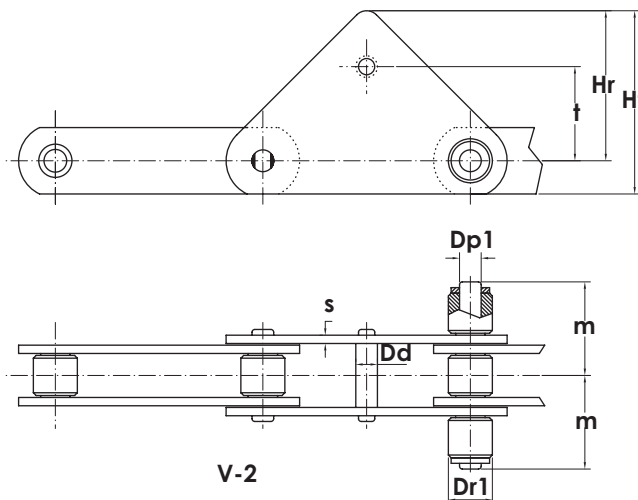
ATTACHMENTS FOR SPECIAL CONVEYOR CHAINS



V-1

### TIPO V-1 - TYPE V-1

CODICE CATENA	passo P mm	Dimensioni					Sovrappeso unitario approssimato attacco V-1 Kg
		altezza rialzo Hr mm	altezza attacco Ht mm	posizione verticale attacco i mm	inclinazione attacco α gradi	altezza attacco s mm	
• SP4V/750 • SP7V/750	75	43,5	56,5	67	65°	4,0	0,038
	75	55,0	74,0	62	60°	5,0	0,156



V-2

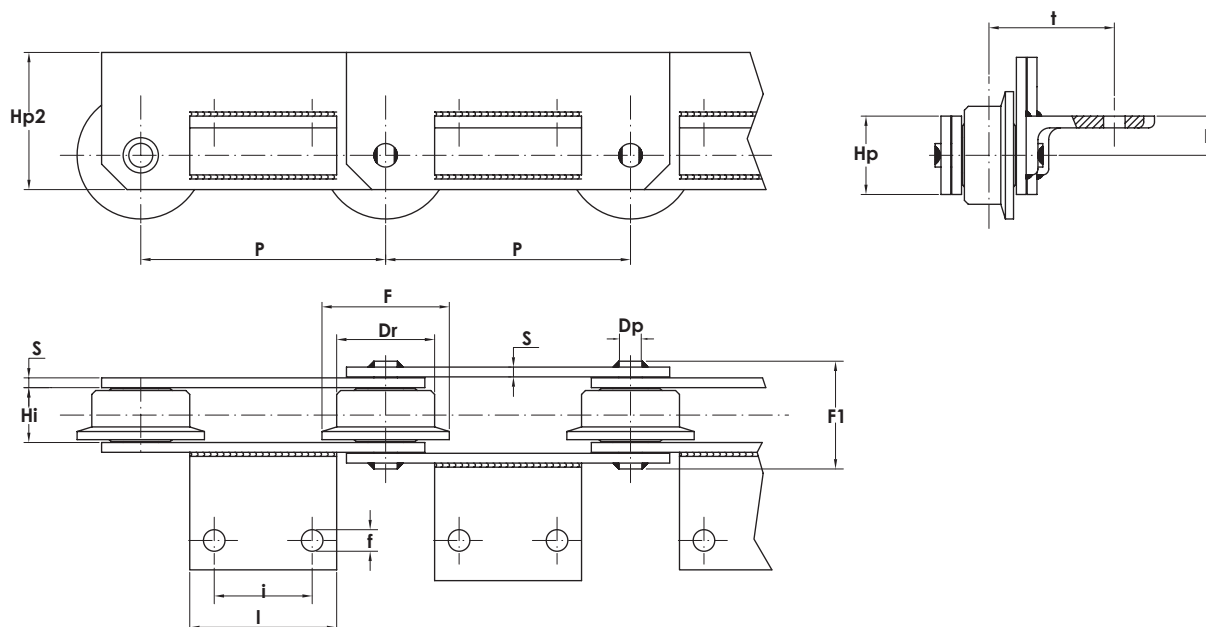
### TIPO V-2 - TYPE V-2

CODICE CATENA	passo P mm	Composizione	Dimensioni								Sovrappeso unitario approssimato attacco V-2 mm
			altezza rialzo Hr mm	altezza attacco Ht mm	altezza distanz. t mm	diam. distanz. D <sub>d</sub> mm	spessore attacco s mm	diam. perno sporgen. D <sub>p1</sub> mm	sporgenza da centro catena m mm	diam. rullo laterale D <sub>r1</sub> mm	
• SP7V/150	150	con distanziale saldato	110	136	70	20	6	/	/	/	0,642
		con distanziale non saldato	110	136	70	18	6	/	/	/	0,615
		con perni sporgenti bilaterali	110	136	70	18	6	14,35	60	/	0,687
		con rulli laterali bilaterali	110	136	70	18	6	14,35	60	31	0,951



## CATENE PER L'INDUSTRIA DEL RICICLAGGIO

WASTE RECYCLING INDUSTRY CHAIN



### PERNI PIENI - SOLID PINS

CODICE CATENA	Dimensioni															TRADE MARK
	passo	largh. interna min.	diam. rullo	diam. flangia	diam. perno	altezza piastrine	altezza piastrone	spess. piastrine	altezza aletta	lungh. aletta	diam. fori aletta	interasse trasv. fori	interasse longitud. fori	largh. perno ribad.	Carico minimo di rottura	
	p mm	Hi mm	Dr mm	F mm	Dp mm	Hp mm	Hp2 mm	S mm	h mm	I mm	f mm	t mm	i mm	F1 mm	Kg	
• <b>D1413</b>	100	22	40	50	15	35	70	6	28	50	13	57	-	54	10.000	
• <b>D0471</b>	125	34	50	60	12	35	100	5	35	75	11	51	50	61	8.000	
• <b>D0472</b>	125	34	50	60	12	35	100	5	-5 (*)	75	11	51	50	61	8.000	
• <b>D0159</b>	125	28	50	60	12	35	100	5	35	75	11	48	50	55	8.000	
• <b>D0718</b>	125	28	50	60	12	35	100	5	-7 (*)	75	11	48	50	55	8.000	
• <b>D0864</b>	125	28	50	65	12	35	100 <small>(spess. 6mm)</small>	5	35	75	11	64	50	55	8.000	
• <b>D1142</b>	125	28	50	65	12	35	70 <small>(spess. 6mm)</small>	5	35	75	11	64	50	57	8.000	
• <b>D1726</b>	125	28	50	65	12	35	70 <small>(spess. 6mm)</small>	5	-8 (*)	75	11	64	50	57	8.000	
• <b>D1143</b>	160	37	70	90	18	50	100 <small>(spess. 8mm)</small>	7	55	80	14	62	50	76	16.000	
• <b>D1898</b>	160	37	70	90	18	50	100	7	-4 (*)	80	14	62	50	76	16.000	
• <b>D0109</b>	200	36	65	80	20	50	100	8	25	120	17	70	80	76	20.387	
• <b>D1507</b>	200	37	60	75	18	50	100	6	6	120	13	55,5	90	69	20.000	

**EURO  
CATENE**

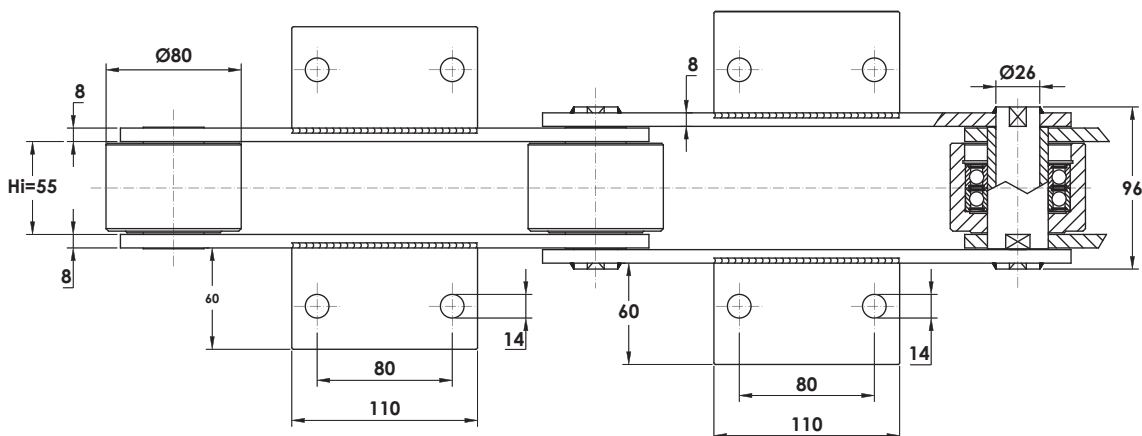
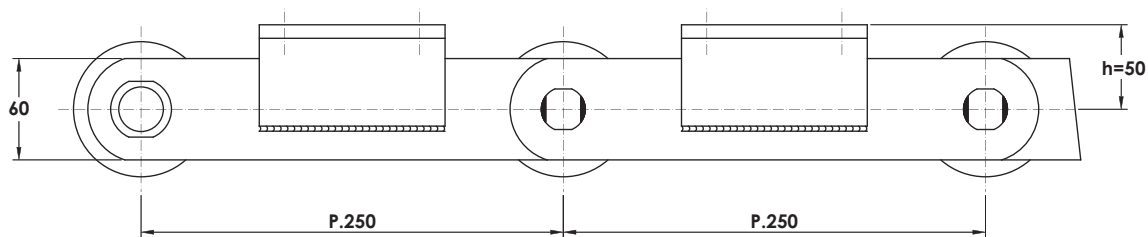
(\*) Posizione dell'attacco sotto il centro catena / Position of attachment under the center line of chain

N.B. Si possono costruire a richiesta catene con misure diverse o dimensioni attacchi diverse / On request different chains or different attachments dimensions are available.

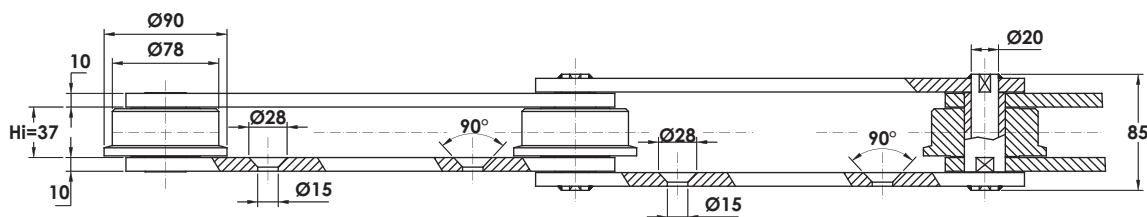
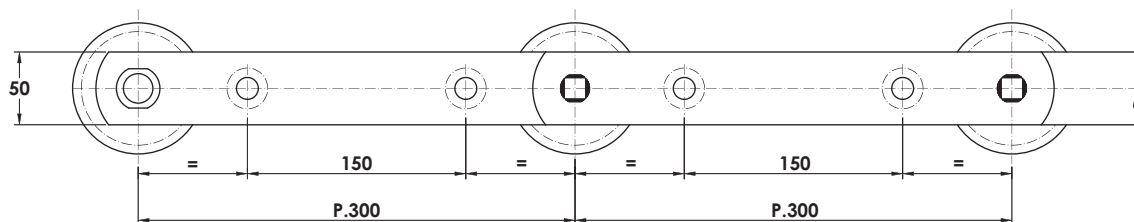


**IMPIANTI RICICLAGGIO**  
WASTE RECYCLING PLANTS

**Code :** D1862  
**Chain :**  
FV250 x 55 x Ø80Ball Bearing Roller  
**Breaking load =** 25.000 daN



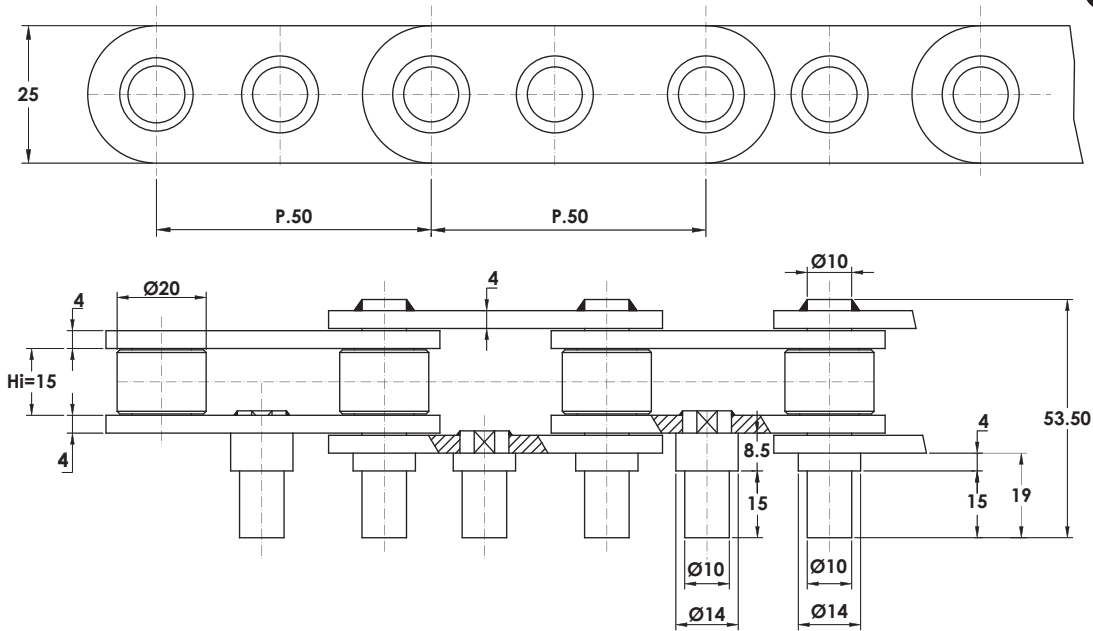
**Code:** D1496  
**Chain :** P.300 x 37 x Ø90Roller  
**Breaking load =** 34.350 daN



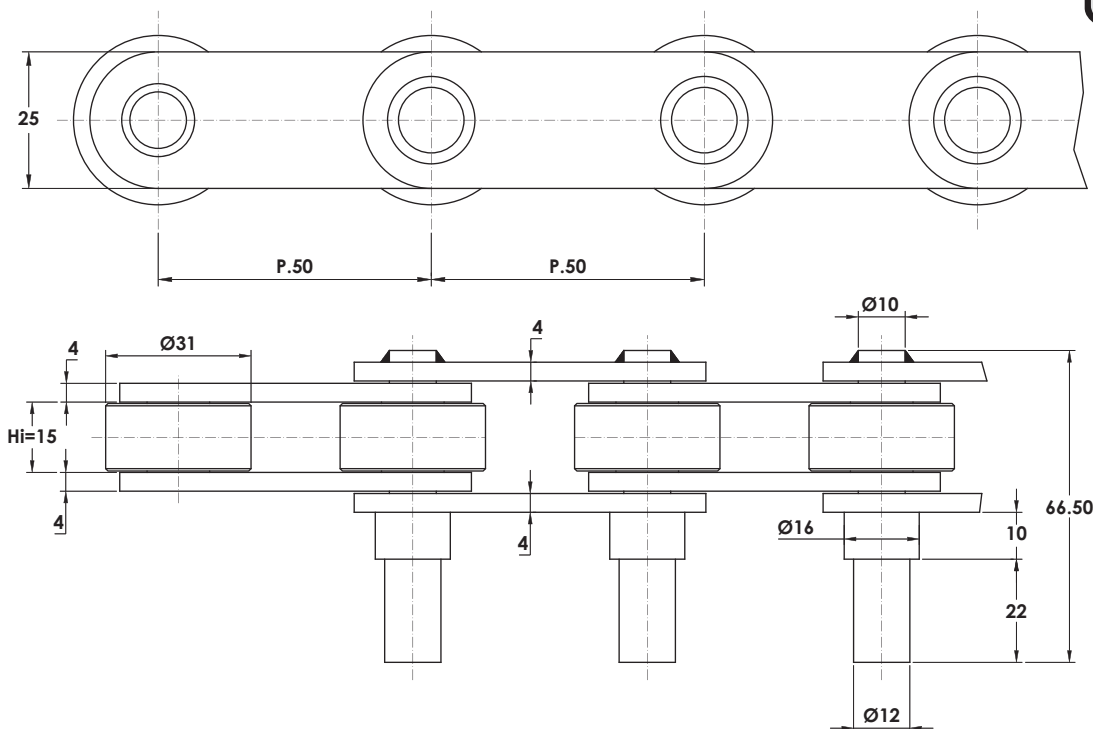
**INDUSTRIA ALIMENTARE**  
FOOD INDUSTRY

**IMPIANTO PER CONSERVE - TOMATO PLANTS**

**Code:** D1377  
**Chain:** P.50 x 15 x Ø20 Roller  
**Breaking load =** 7.500 daN



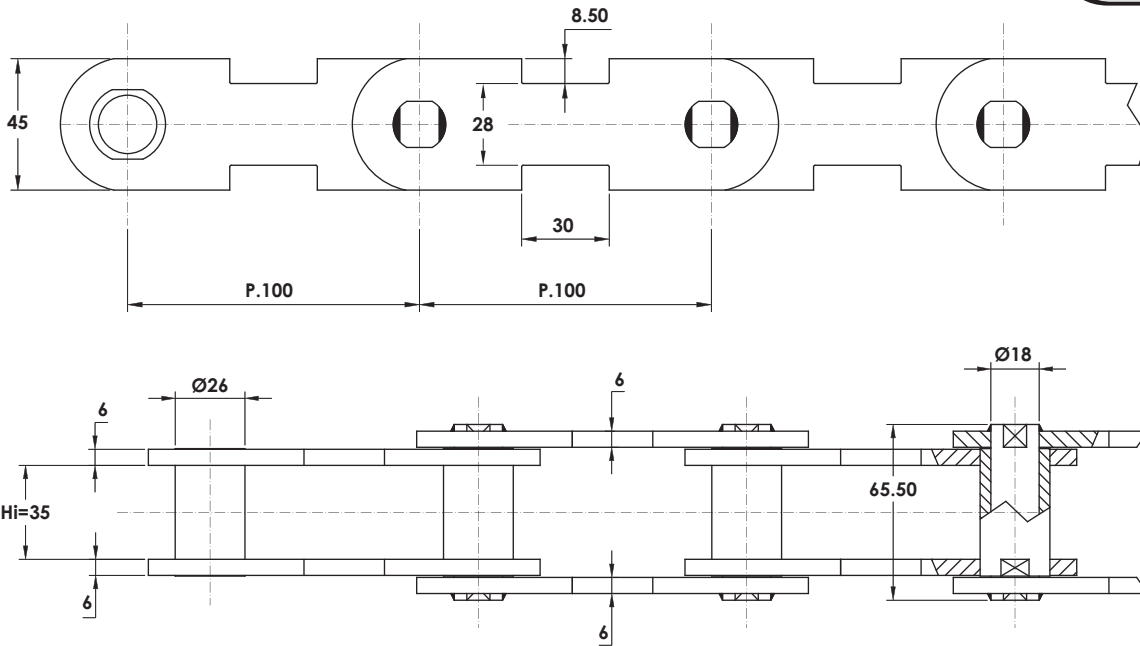
**Code:** D1796  
**Chain:** P.50 x 15 x Ø31 Roller  
**Breaking load =** 8.200 daN



**INDUSTRIA ALIMENTARE**  
FOOD INDUSTRY

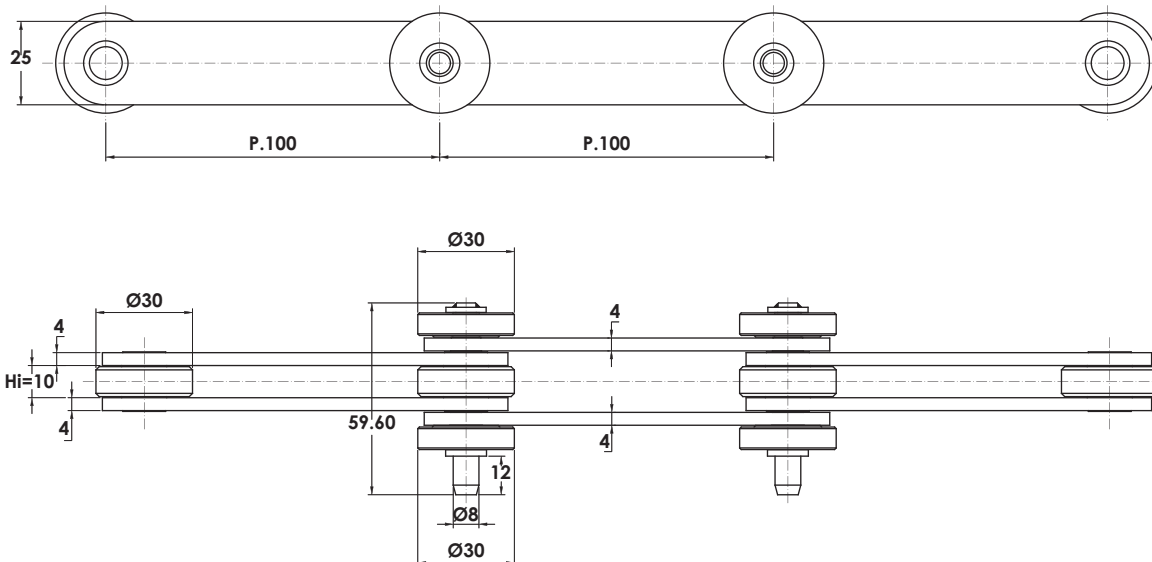
**IMPIANTI PER MACELLAZIONE - SLAUGHTER HOUSES PLANTS**

**Chain: P.100 x 35 x Ø26 Bush**  
**Breaking load = 13.000 daN**



Esecuzione zincata / Zinc execution  
Disponibili anche in versione autolubrificante e in versione inox / Available also in freelubricant version and stainless version

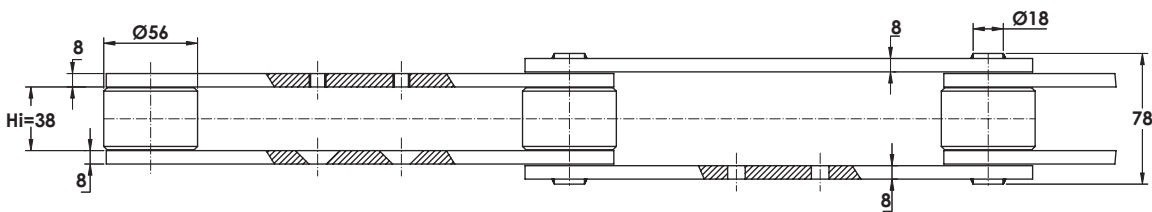
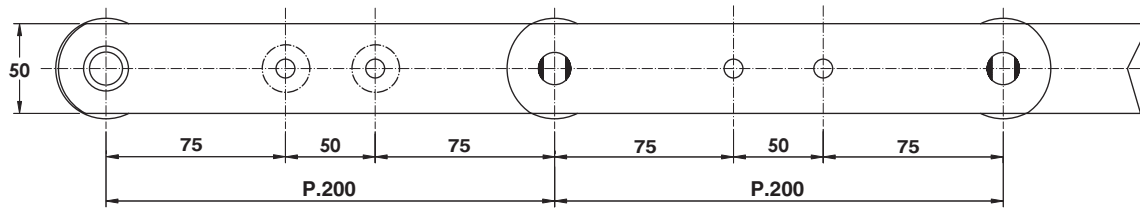
**Code: D1273**  
**Stainless Steel Chain:**  
P.100 x 10 x Ø30 Roller  
**Breaking load = 4.900 daN**



**INDUSTRIA ALIMENTARE**  
FOOD INDUSTRY

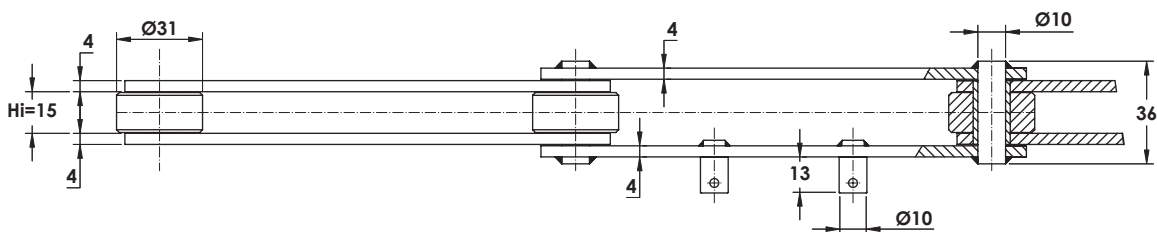
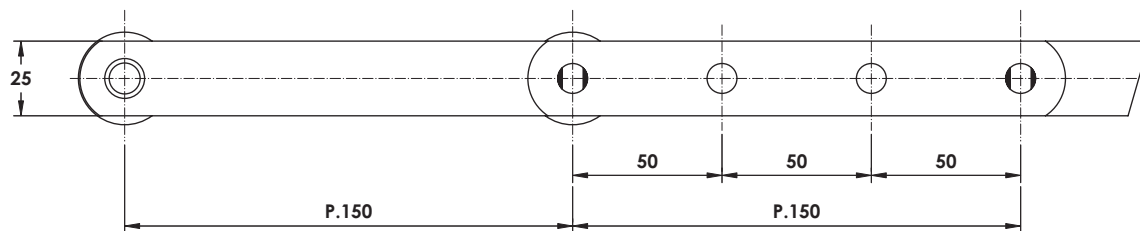
**IMPIANTI PER MACELLAZIONE - SLAUGHTER HOUSES PLANTS**

**Code:** D1945  
**Chain:** P.200 x 38 x Ø56 Roller  
**Breaking load =** 16.000 daN



Esecuzione zincata / Zinc execution

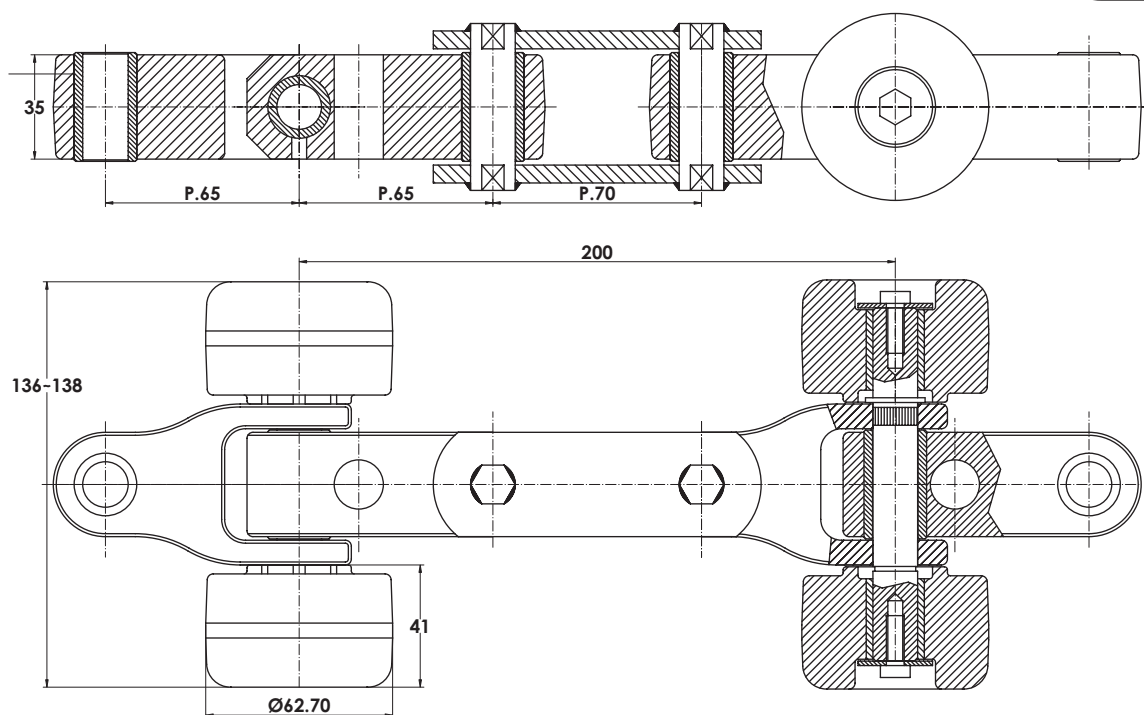
**Chain:** P.150 x 15 x Ø31 Roller  
**Breaking load =** 4.600 daN



**INDUSTRIA ALIMENTARE**  
FOOD INDUSTRY

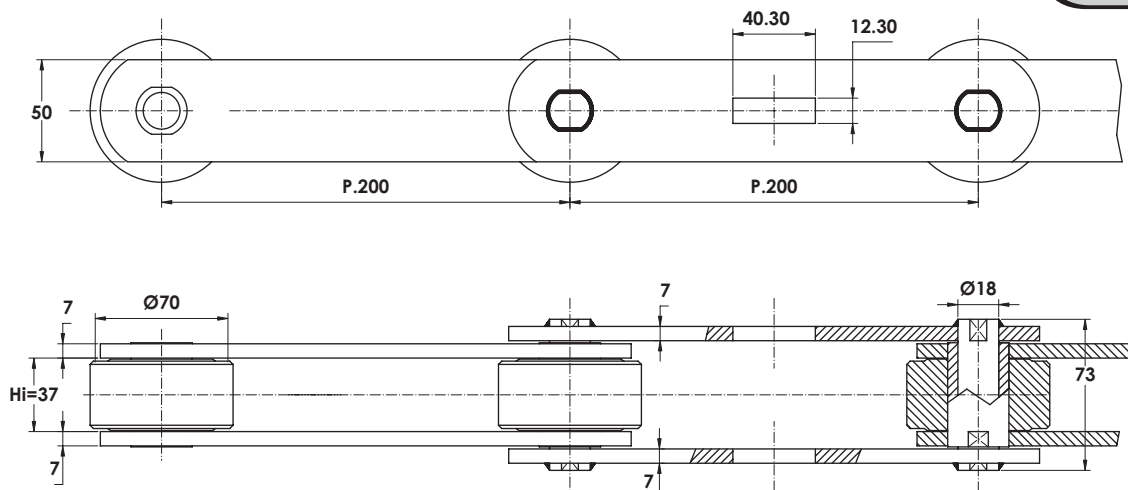
**IMPIANTI PER MACELLAZIONE - SLAUGHTER HOUSES PLANTS**

**Code:** D2760  
**Duo Plan Chain:** P.200  
**Breaking load =** 15.000 daN



Esecuzione zincata / Zinc execution

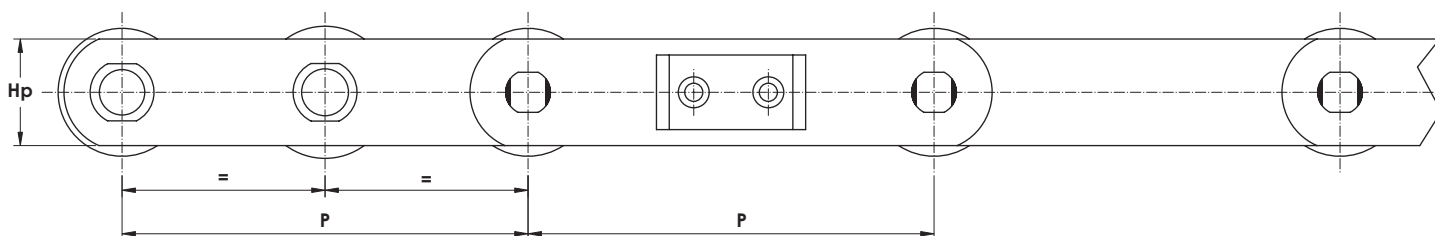
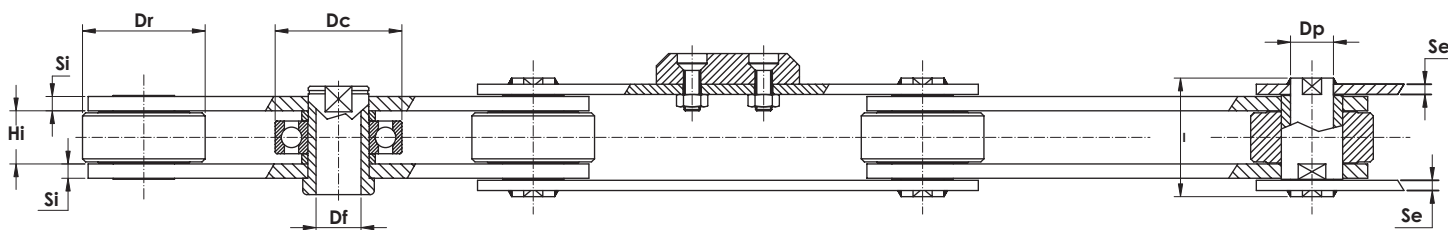
**Code:** D2541  
**Chain:** P.200 x 37 x Ø70 Roller  
**Breaking load =** 16.000 daN





### INDUSTRIA ALIMENTARE

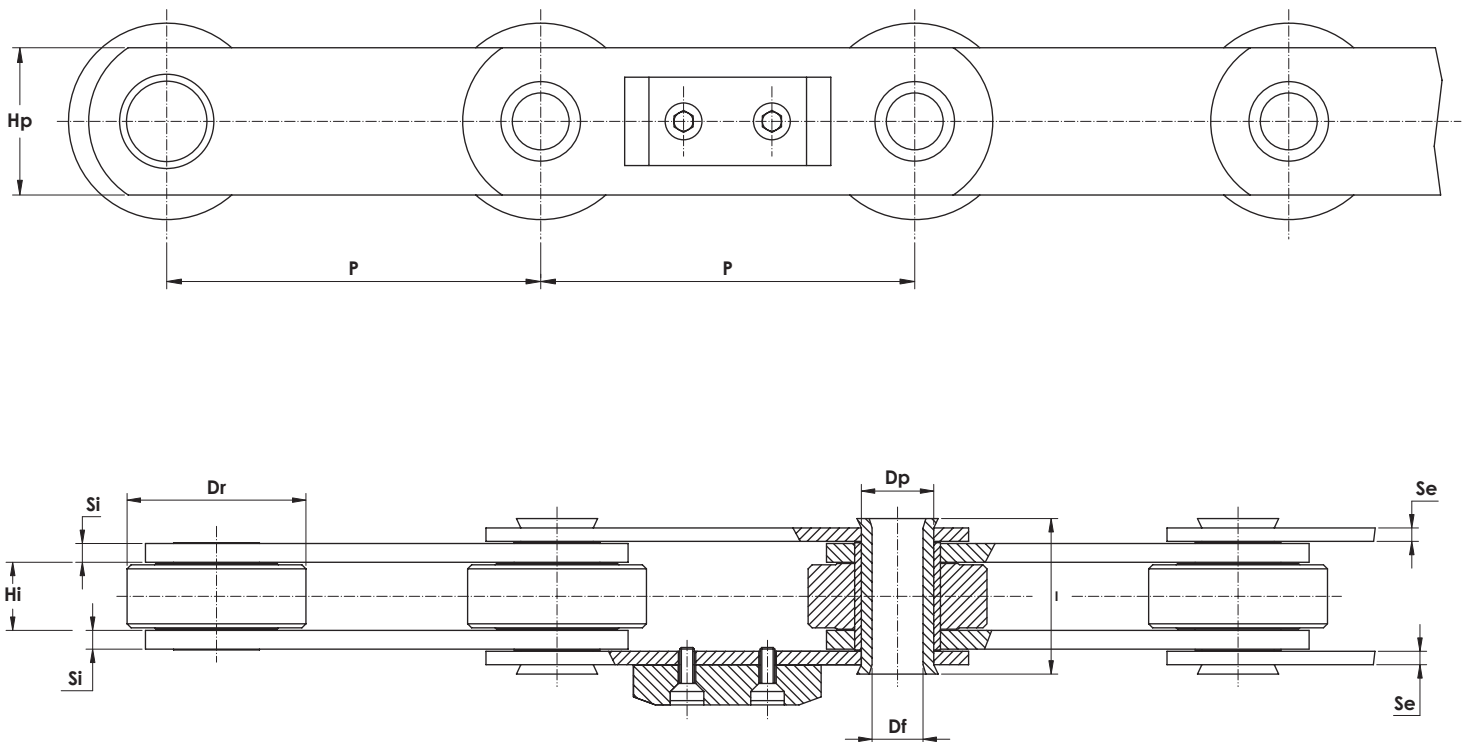
PROVER INDUSTRY



### CELLE DI LIEVITAZIONE - SWINGING TRAYS CONVEYORS

CODICE CATENA	passo	Dimensioni										Carico di rottura
		largh. interna min.	diam. rullo	diam. max perno	largh. perno ribad.	posizione base attacco		diam. perno forato	altezza max piastra	spess. pastre int.	spess. piastre est.	Breaking Load
	p mm	Hi mm	Dr mm	Dp mm	l mm	i mm	Dc mm	Df mm	Hp mm	Sj mm	Se mm	daN Kg
• <b>D2155</b>	180	32	60	21	63	47	62	18	40/45	6	6	17.000
• <b>D2116</b>	190,5	26	60	21	58	49	62	22	50	7	5	20.000

**INDUSTRIA ALIMENTARE**  
PROVER INDUSTRY



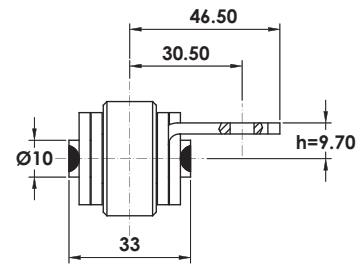
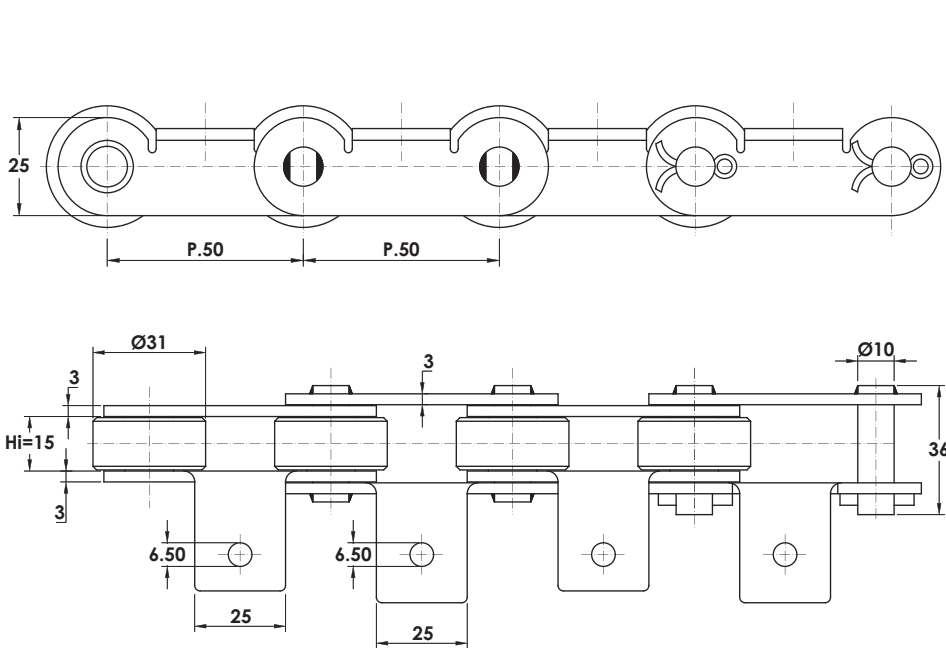
**CELLE DI LIEVITAZIONE - SWINGING TRAYS CONVEYORS**

CODICE CATENA	passo p mm	Dimensioni								Carico di rottura Breaking Load daN Kg
		largh. interna min. Hi mm	diam. rullo Dr mm	altezza max piastra Hp mm	spess. piastre int. Si mm	spess. piastre est. Se mm	diam. max perno Dp mm	diam. perno forato Df mm	largh. perno ribad. l mm	
• <b>D1657</b>	100	22	40	35	4	4	18	12	44	8.000
• <b>D2169</b>	125	25	50	40	5	5	18	12	51	10.000
• <b>D2008</b>	127	25,40	66,70	50	7	6	27	19/20	58	19.600

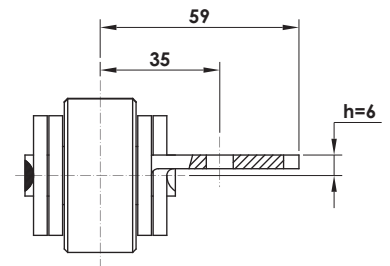
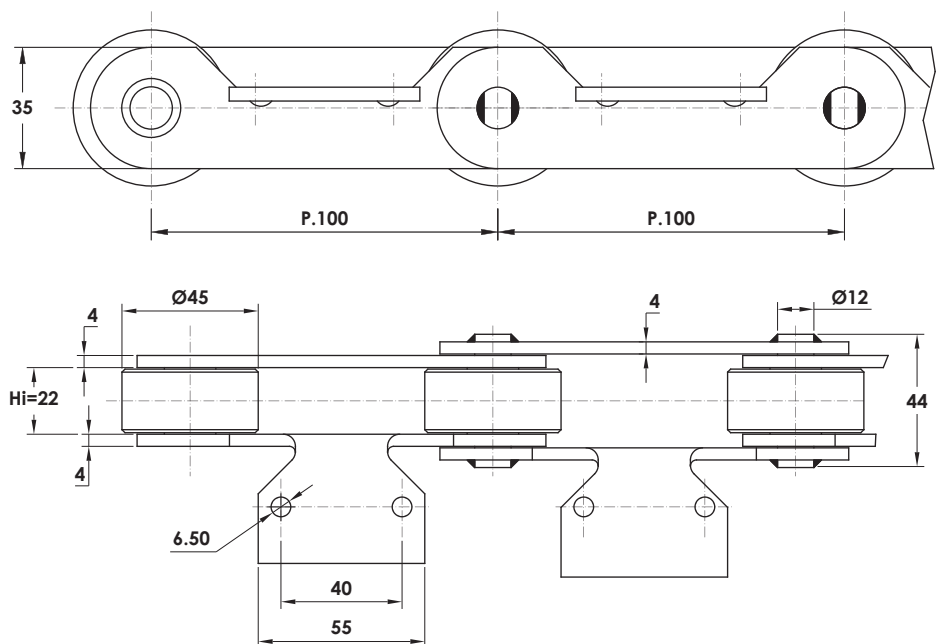
**INDUSTRIA ALIMENTARE**  
FOOD INDUSTRY

**FORNI COTTURA PANE - BREAD BAKING OVENS**

**Code:** D1175  
**Chain:** P.50 x 15 x Ø31 Roller  
**Breaking load =** 3.450 daN



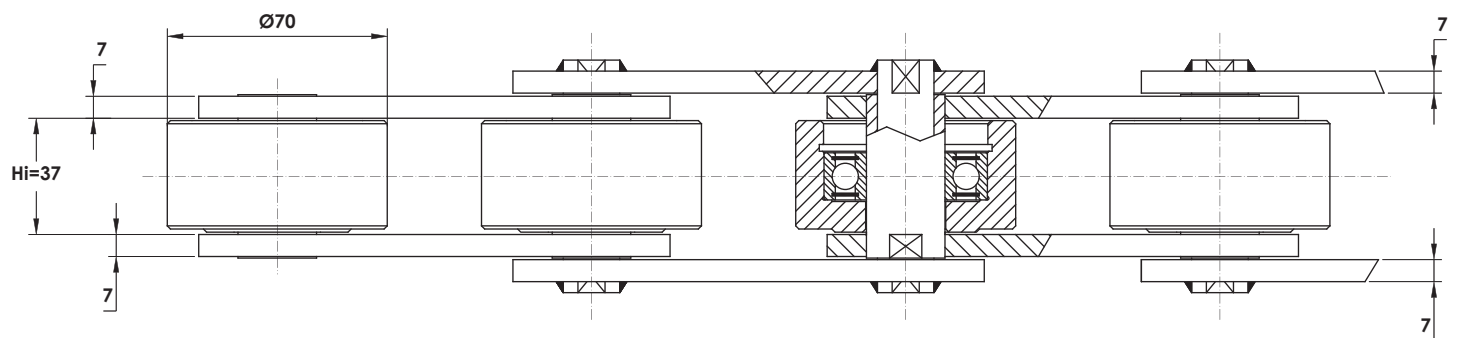
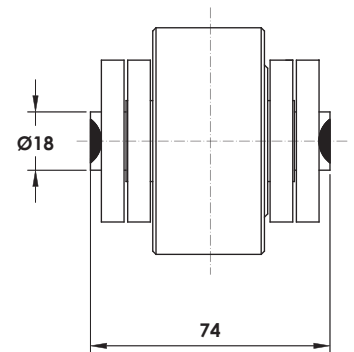
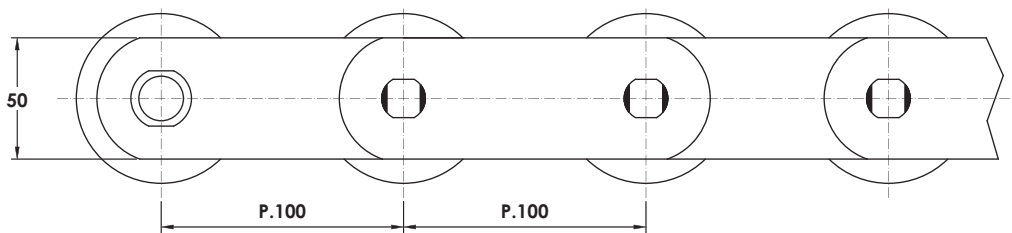
**Code:** D0576  
**Chain:** P.100 x 22 x Ø45 Roller  
**Breaking load =** 7.060 daN



**INDUSTRIA ALIMENTARE**  
PROVER INDUSTRY

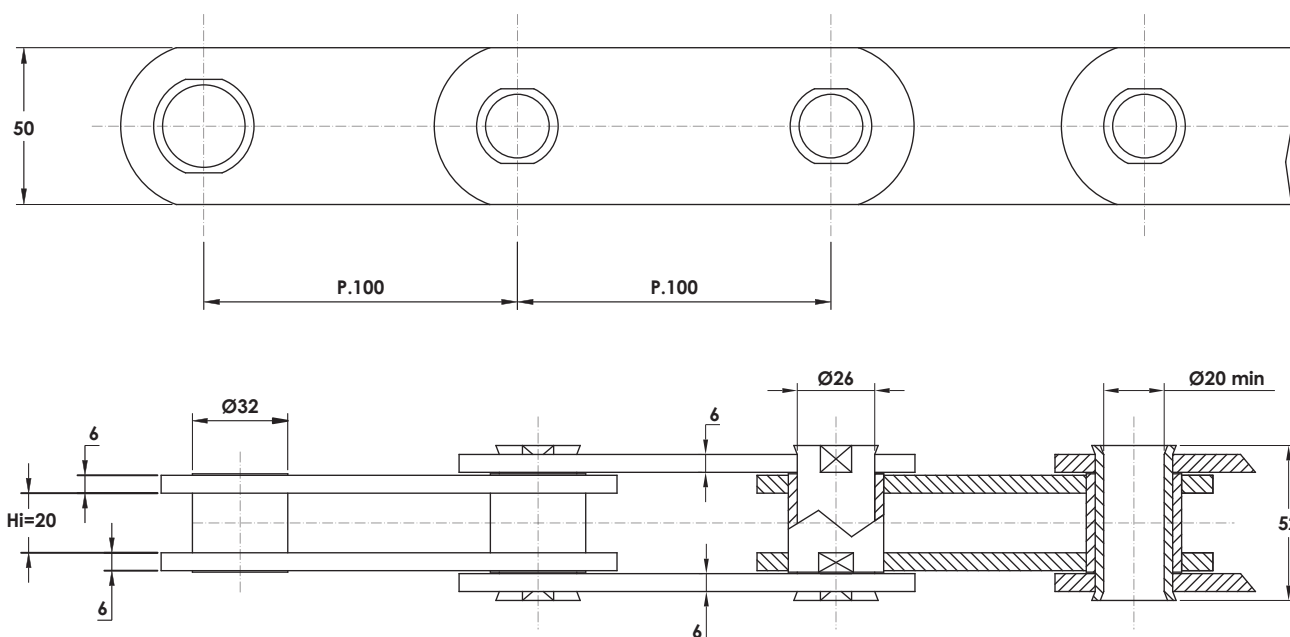
**FORNI COTTURA PANE - BREAD BAKING OVENS**

**Code:** D2030  
**Chain:** P.100 x 37 x Ø70 Roller  
**Breaking load =** 25.000 daN

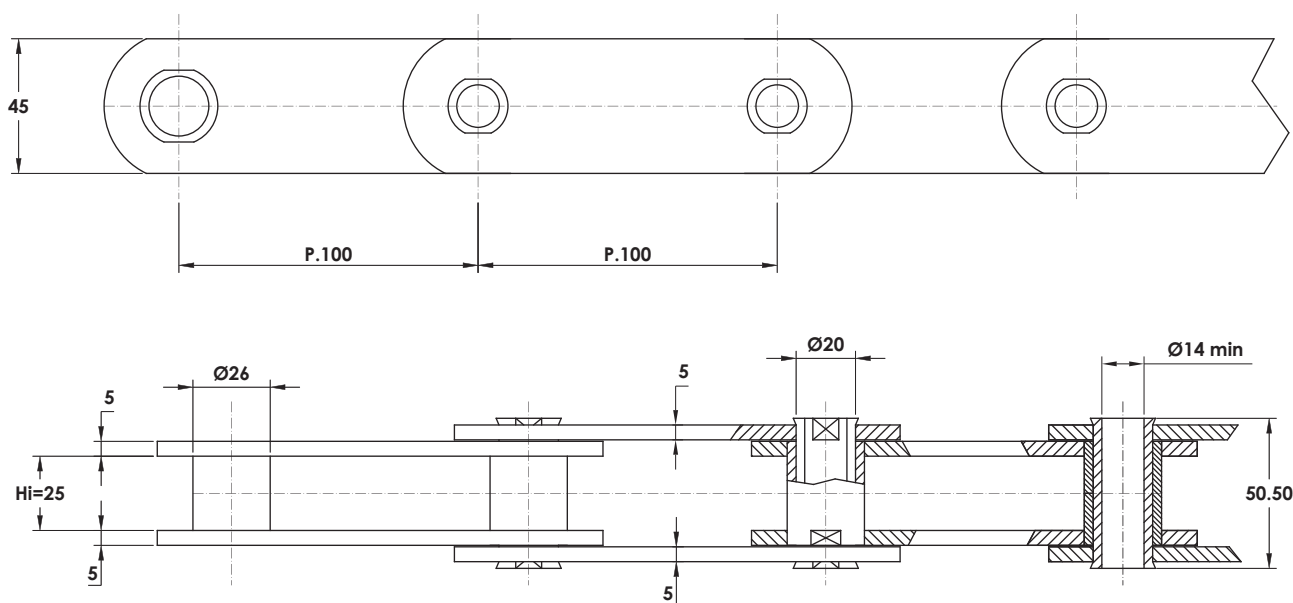


**ELEVATORI VERTICALI**  
PATERNOSTER

**Code:** D2017  
**Chain:** P.100 x 20 x Ø32 Bush  
**Breaking load =** 10.800 daN



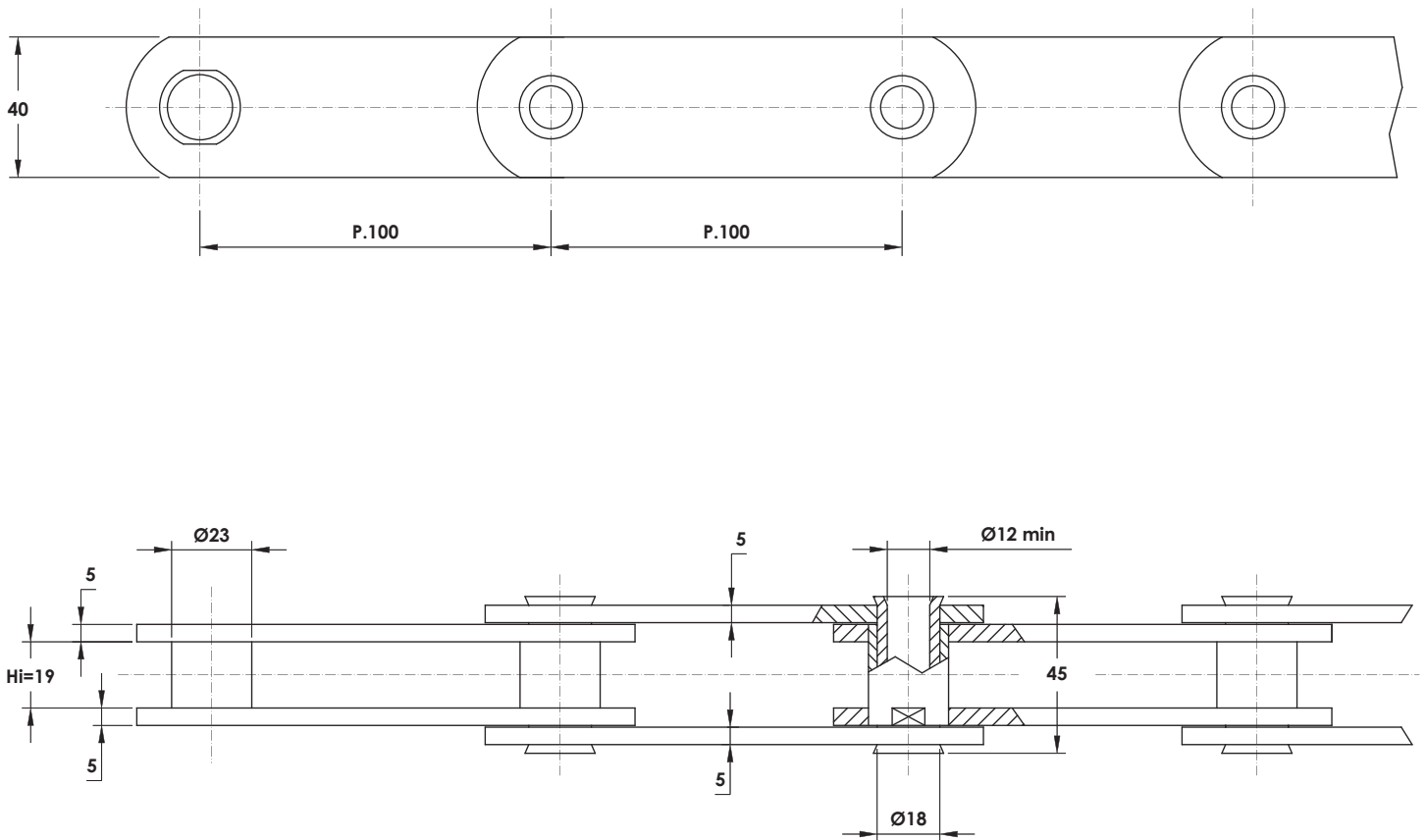
**Code:** D1508  
**Chain:** P.100 x 25 x Ø26 Bush  
**Breaking load =** 9.810 daN





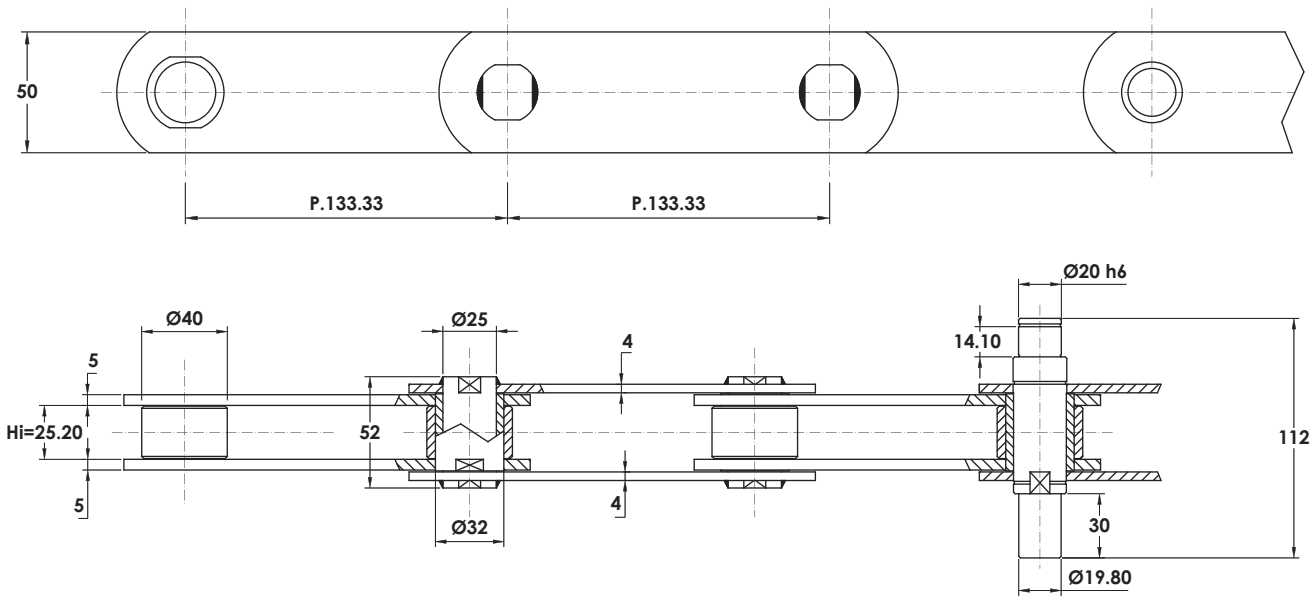
**ELEVATORI VERTICALI**  
PATERNOSTER

Code: D1414  
Chain: P.100 x 19 x Ø23 Bush  
Breaking load = 9.810 daN

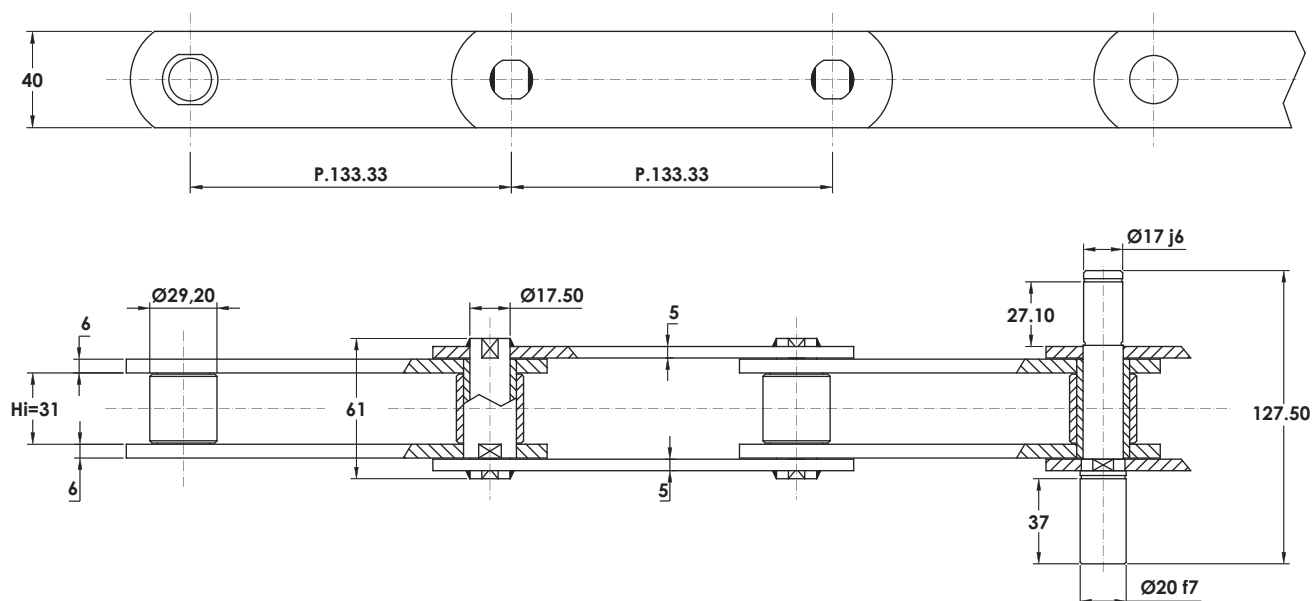


**SCALE MOBILI**  
ESCALATOR CHAIN

**Code:** D1928  
**Chain:** P.133.33 x 25.20 x Ø40 Roller  
**Breaking load =** 22.000 daN

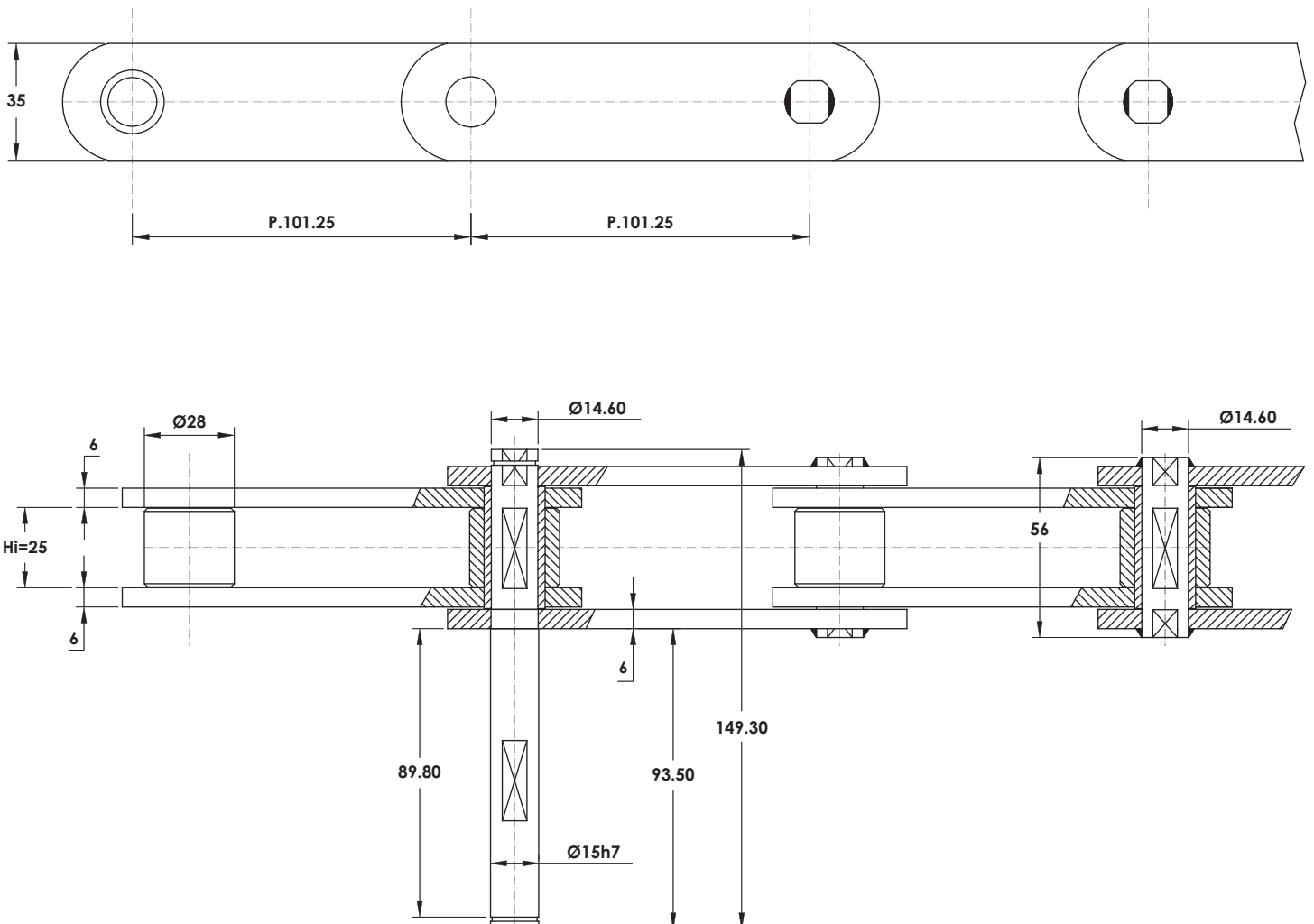


**Code:** D1938  
**Chain:** P.133.33 x 31 x Ø29.20 Roller  
**Breaking load =** 17.660 daN



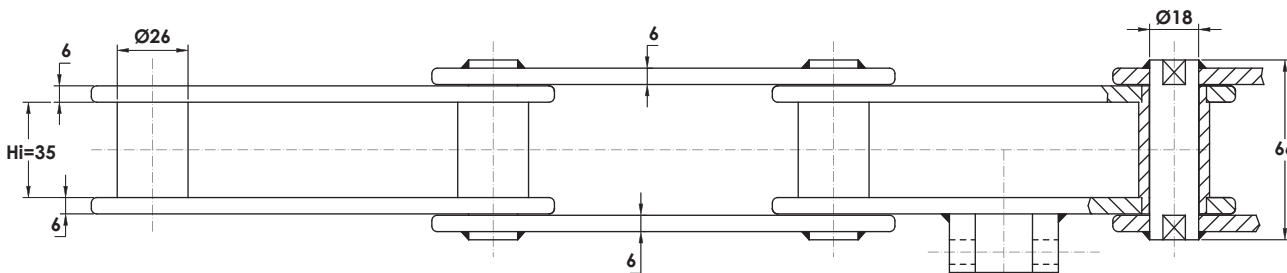
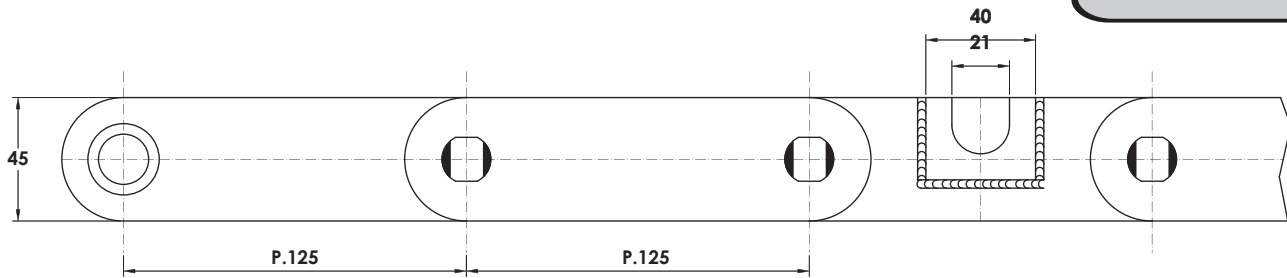
**SCALE MOBILI**  
ESCALATOR CHAIN

**Code:** D2190  
**Chain:** P.101.25 x 25 x Ø28 Roller  
**Breaking load =** 14.715 daN

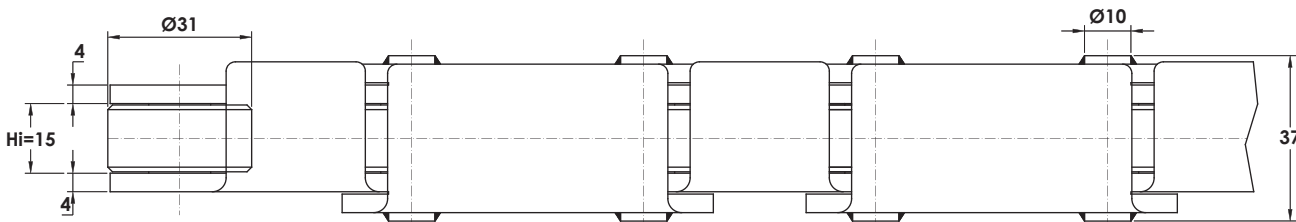
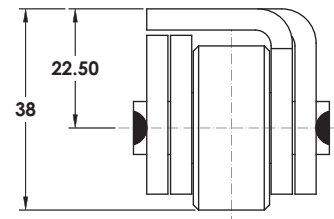
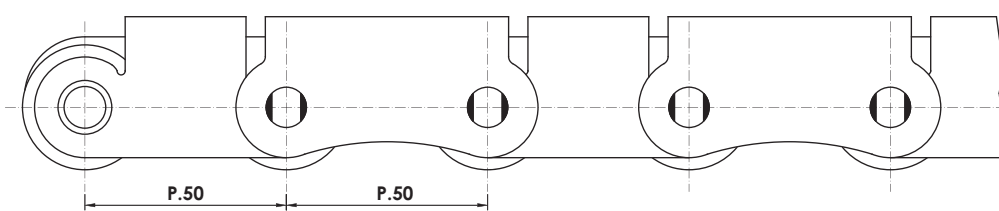


**TUNNEL AUTOLAVAGGIO**  
CAR WASHING TUNNEL

Chain: P.125 x 35 x Ø26 Bush  
Breaking load = 14.500 daN

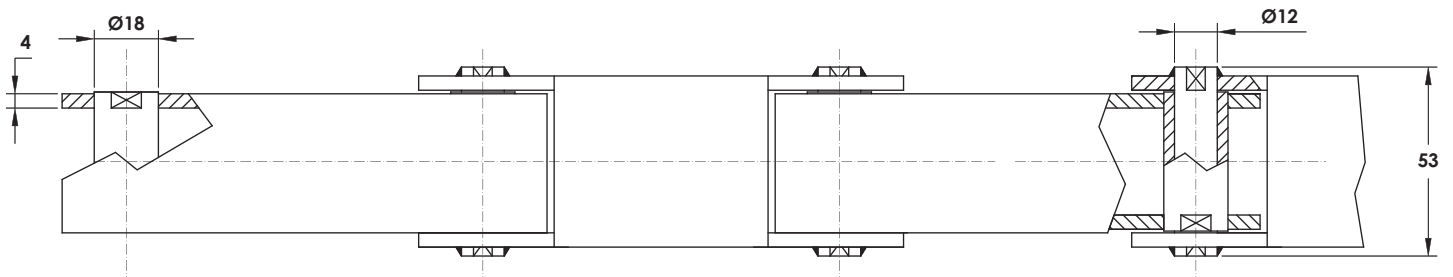
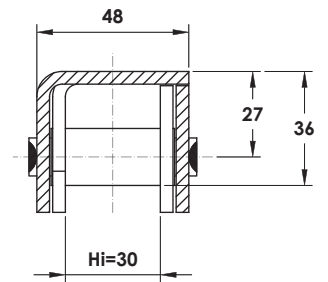
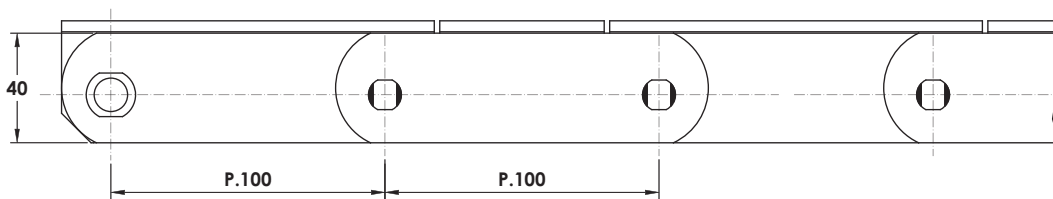


Code: D1646  
Chain: P.50 x 15 x Ø31 Roller  
Breaking load = 8.360 daN



**TUNNEL AUTOLAVAGGIO**  
CAR WASHING TUNNEL

**Code:** D1875  
**Chain:** P.100 x 30 x Ø18Bush  
**Breaking load =** 8.000 daN

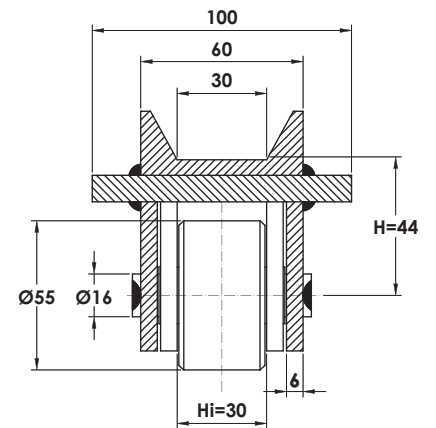
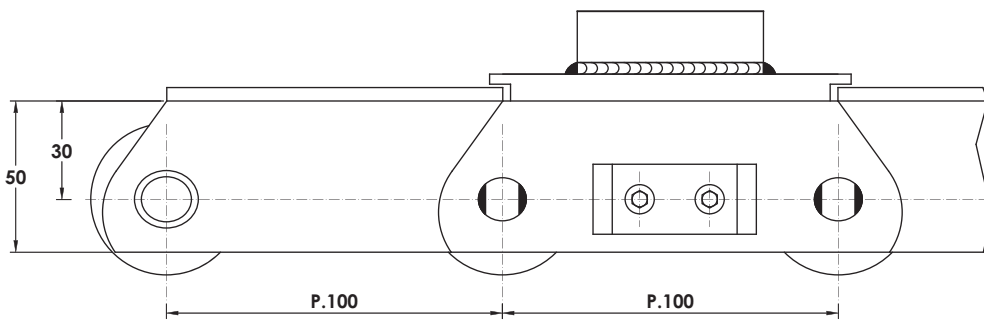




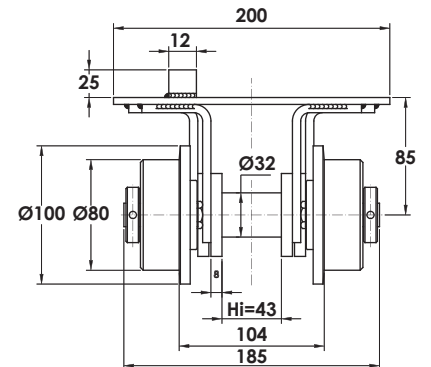
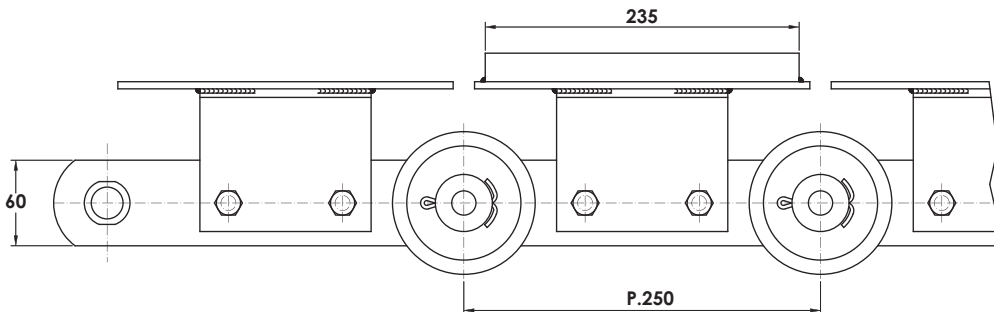
**INDUSTRIA AUTO**  
AUTOMOTIVE INDUSTRY

**SKID CONVEYORS**

**Code:** FV112  
**Chain:** P.100 x 55 x Ø55 Roller  
**Breaking load =** 12.000 daN

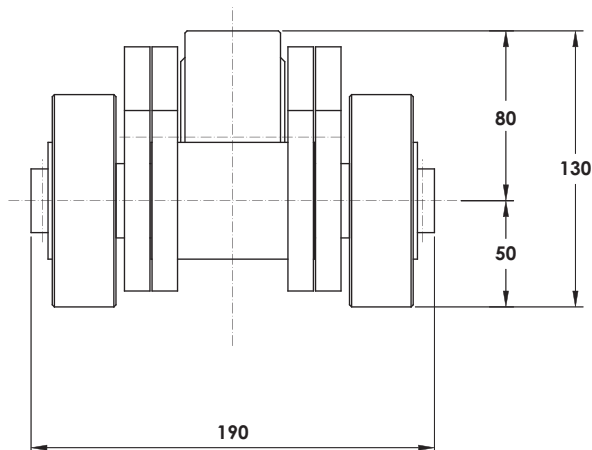
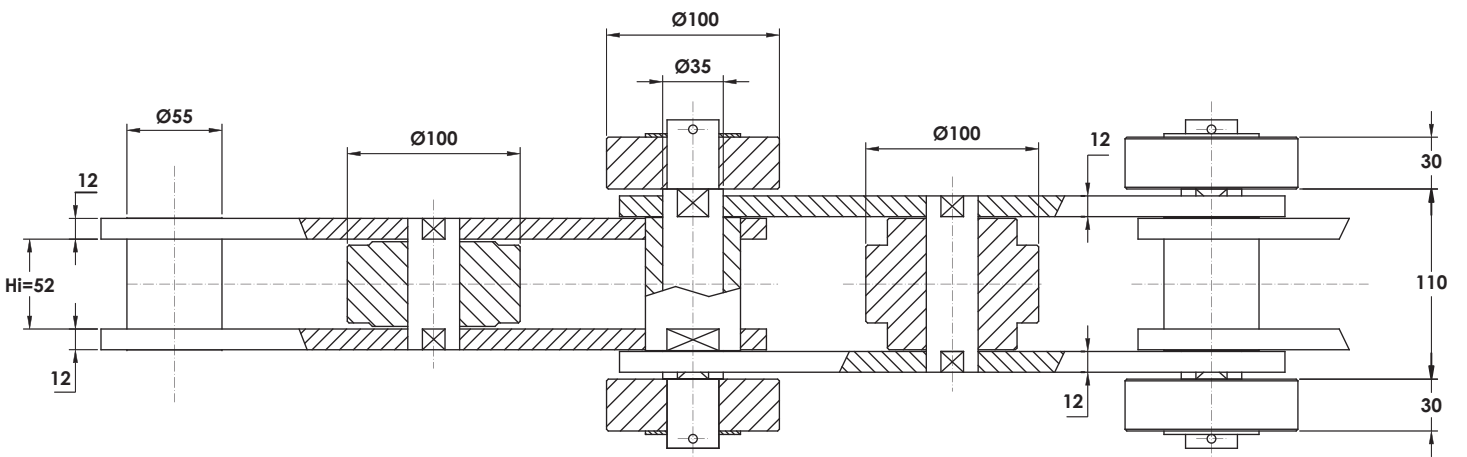
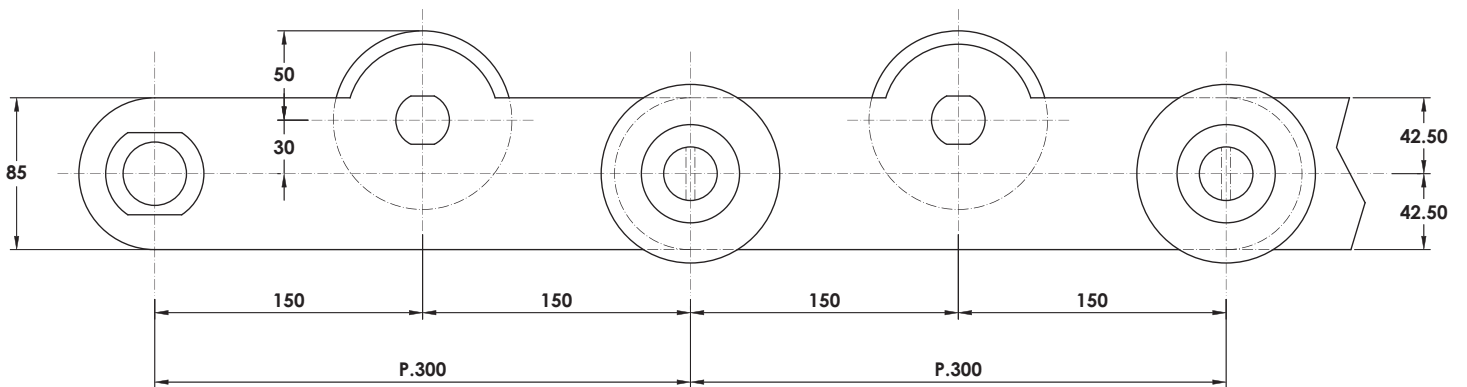


**Chain:** P.250 x 43 x Ø32 Bush  
**Breaking load =** 22.400 daN



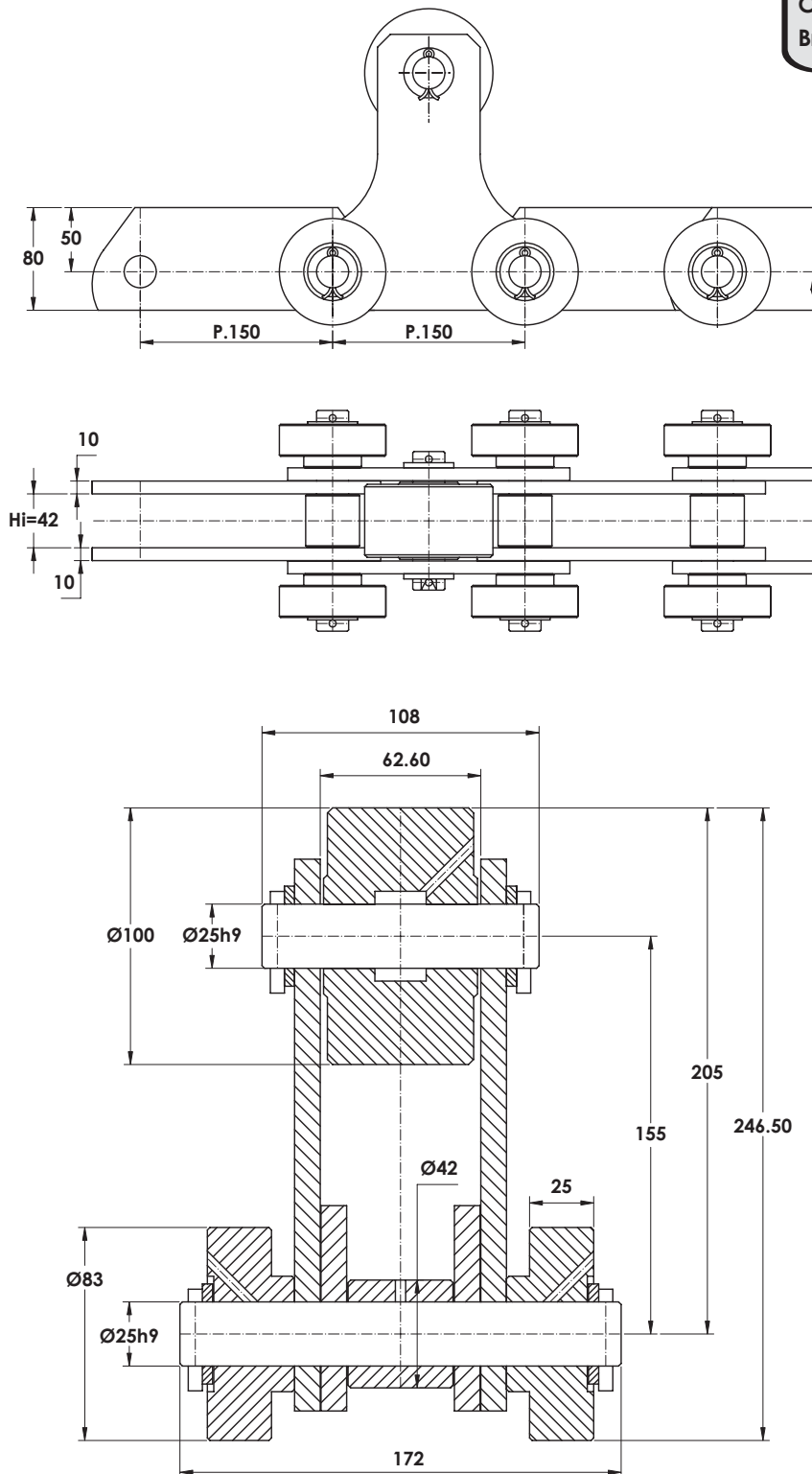
**IMPIANTI ACCIAIERIE**  
STEEL INDUSTRY

Chain: P.300 x 52 x Ø55 Bush  
Breaking load = 46.000 daN



**IMPIANTI ACCIAIERIE**  
STEEL INDUSTRY

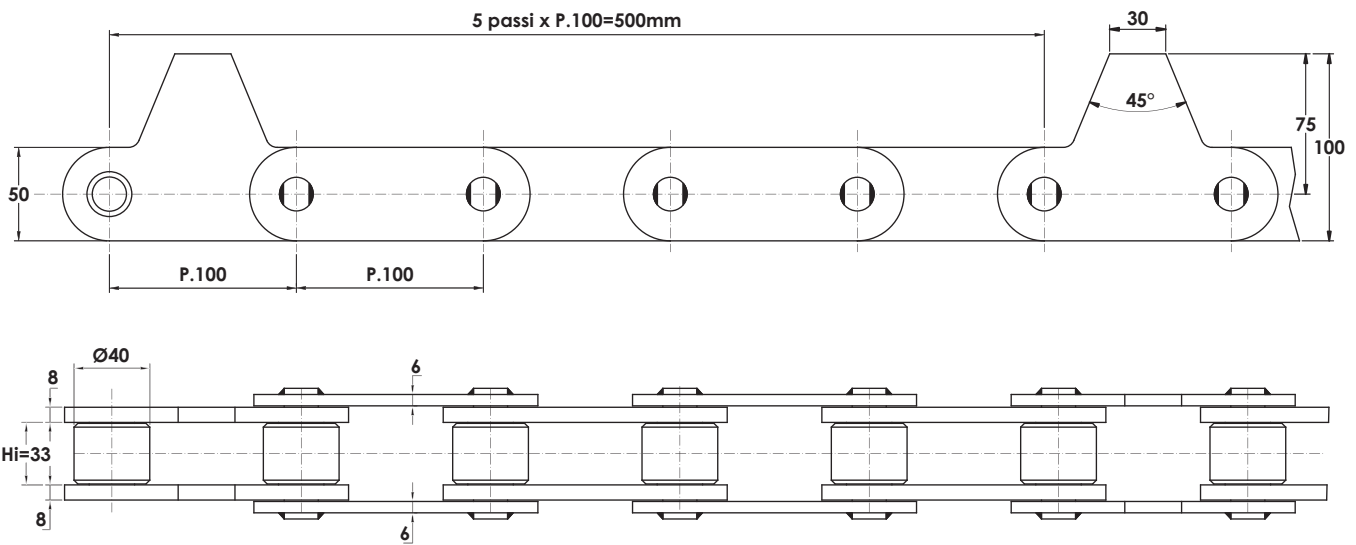
Code: D2296  
Chain: P.150 x 42 x Ø42 Roller  
Breaking load = 35.000 Kg



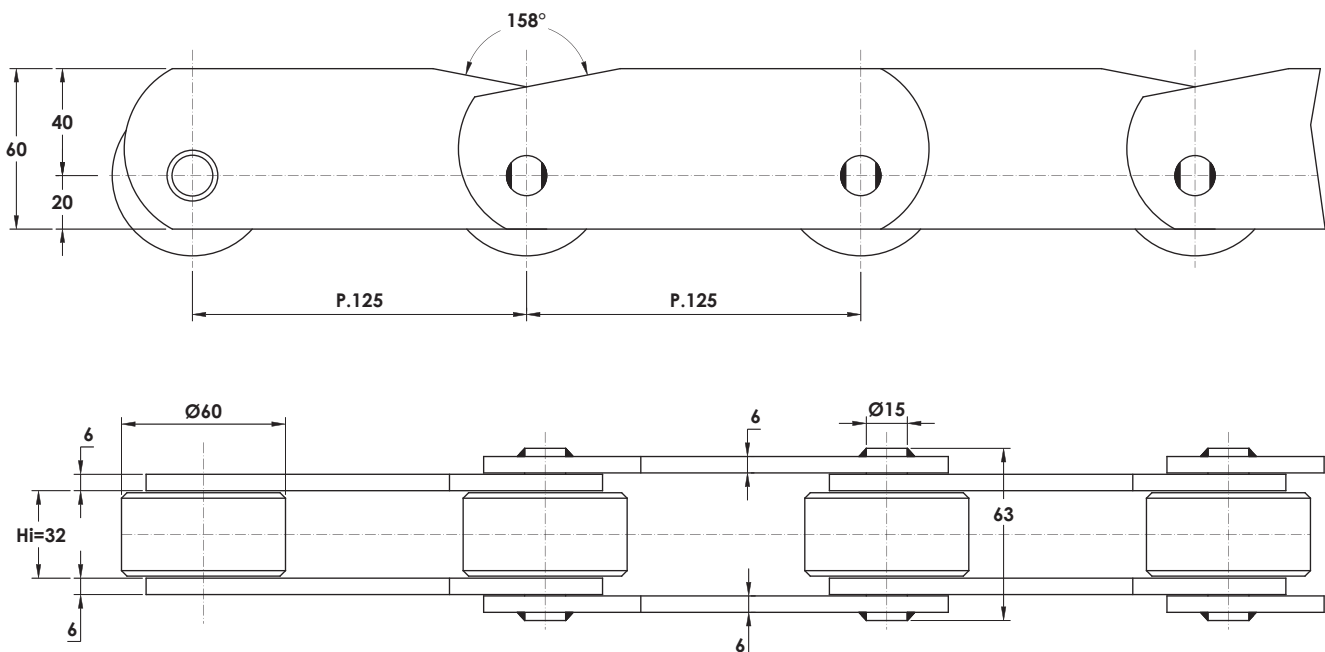


**TRASPORTO TUBI**  
TUBE CONVEYOR PLANTS

**Code:** D1403  
**Chain:** P.100 x 33 x Ø40 Roller  
**Breaking load =** 18.000 Kg

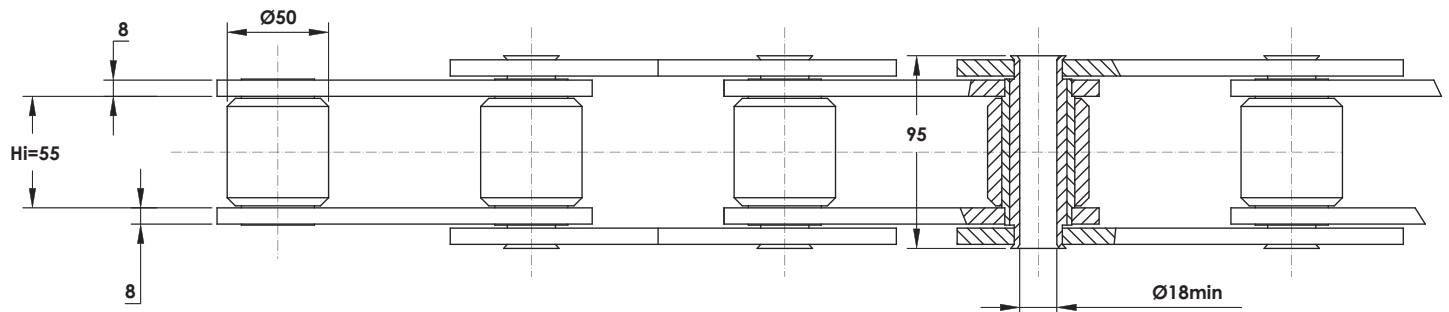
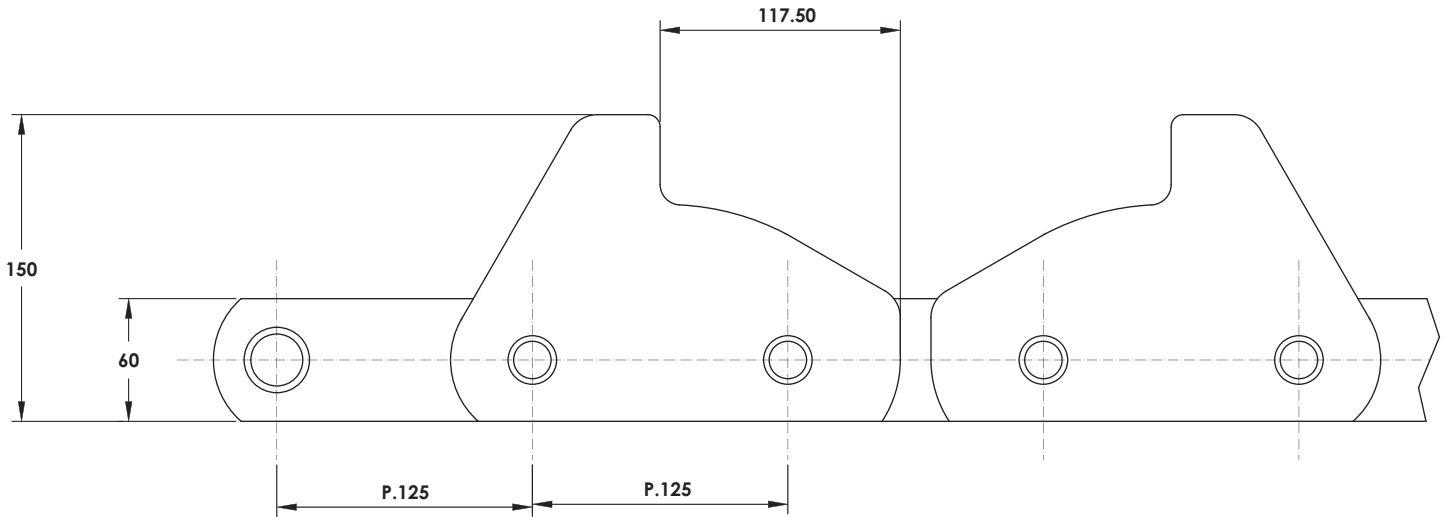


**Code:** D1272  
**Chain M112:** P.125 x 32 x Ø60 Roller  
**Breaking load =** 11.200 daN



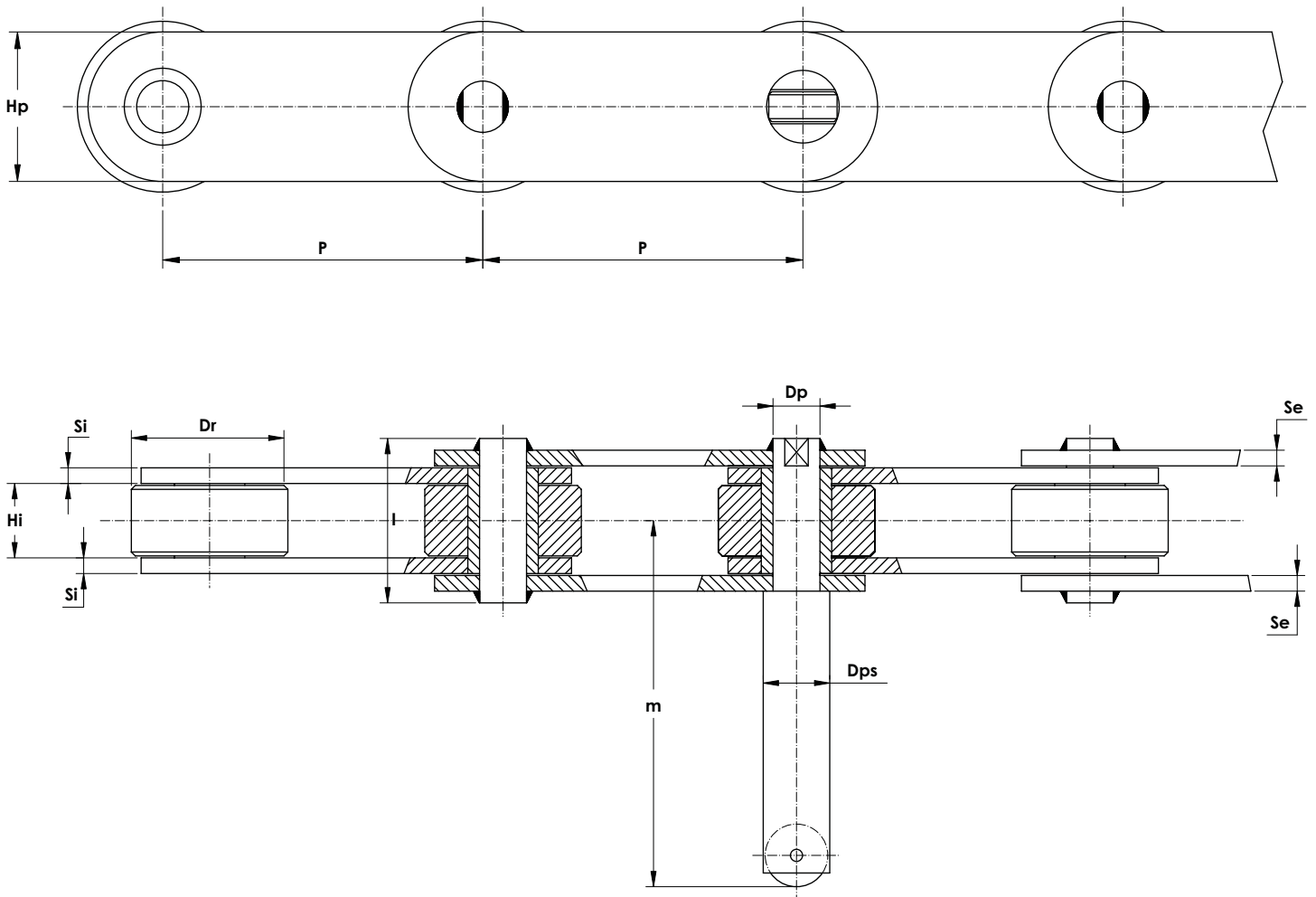
**TRASPORTO TUBI**  
TUBE CONVEYOR PLANTS

Code: D1091  
Chain: P.125 x 55 x Ø50 Roller  
Breaking load = 16.000 daN



## IMPIANTI VERNICIATURA

PAINTING PLANTS

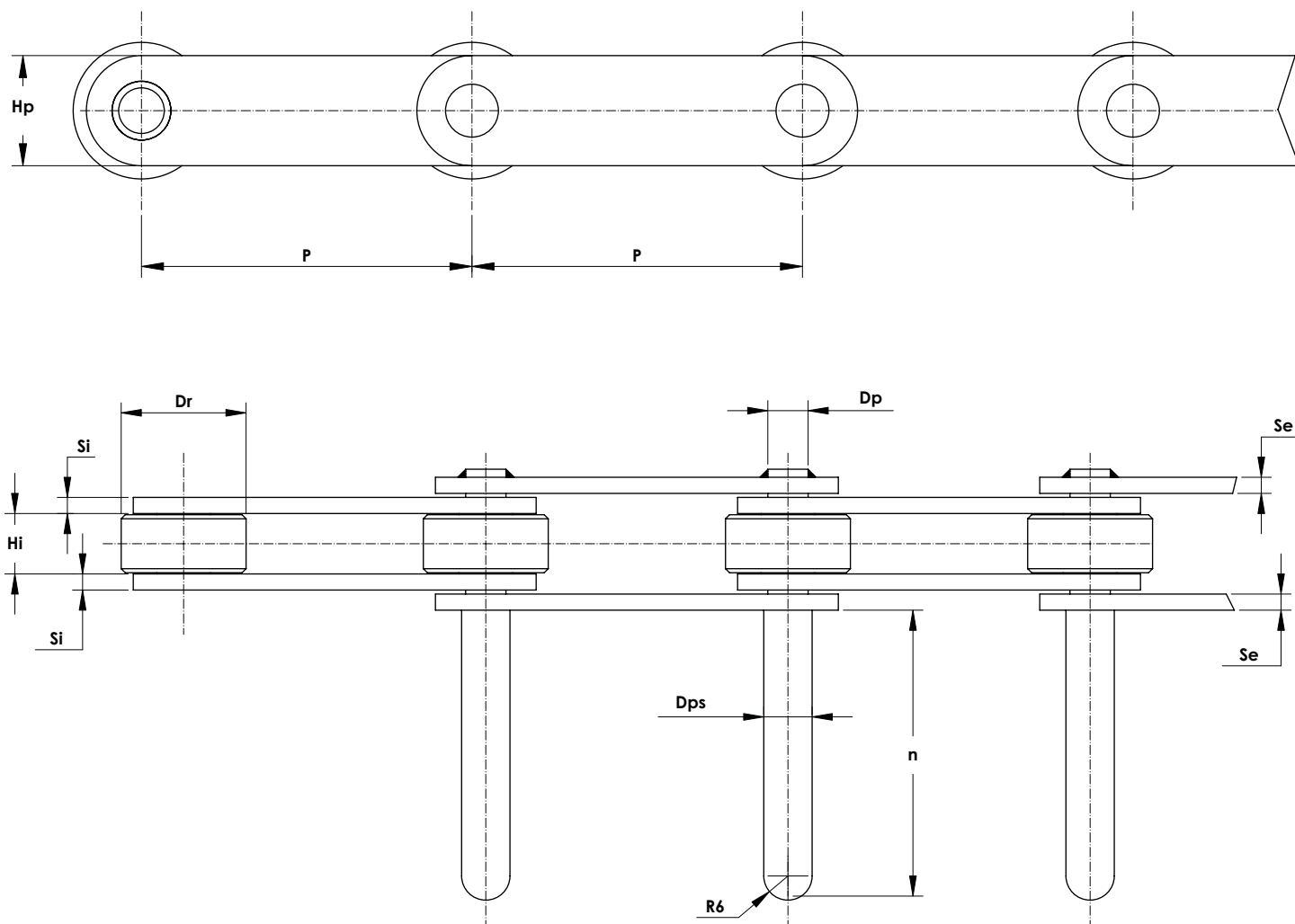


### LINEE DI VERNICIATURA - PAINT LINES

CODICE CATENA	passo  p mm	Dimensioni									Carico di rottura Breaking Load
		largh. interna min. Hi mm	diam. rullo Dr mm	altezza max piastra Hp mm	spess. piastre int. Si mm	spess. piastre est. Se mm	diam. max perno Dp mm	largh. perno ribad l mm	diam. perno sporgente Dps mm	sporgenza da centro catena m mm	daN Kg
	75	19	40	35	4	4	12	42	17	93,50	8.200
	100	19	40	35	4	4	12	42	17	93,50	8.200

## IMPIANTI VERNICIATURA

PAINTING PLANTS



### LINEE DI VERNICIATURA - PAINT LINES

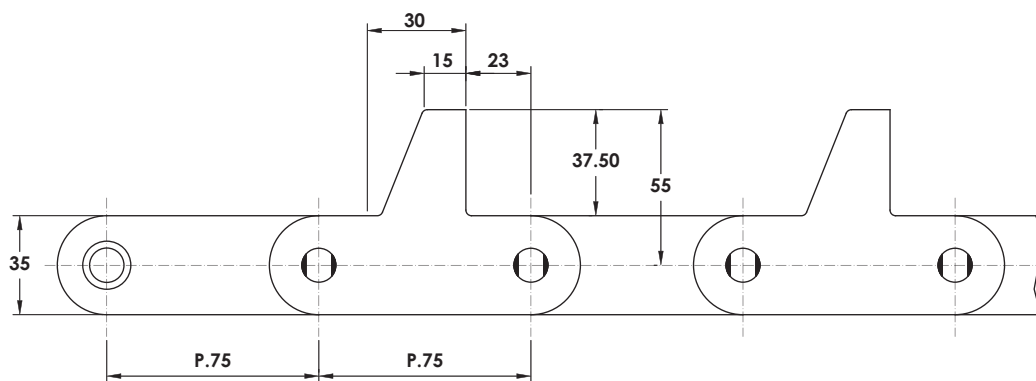
CODICE CATENA	passo	Dimensioni								Carico di rottura Breaking Load
		largh. interna min.	diam. rullo	altezza max piastra	spess. piastre int.	spess. piastre est.	diam. max perno	diam. perno sporgente	sporgenza dal piano piast. est.	
	p mm	Hi mm	Dr mm	Hp mm	Si mm	Se mm	Dp mm	Dps mm	n mm	daN Kg
• <b>D1139</b>	75	15	31	25	4	4	10	12	72	5.000
• <b>D0827</b>	100	15	31	25	4	4	10	12	72	5.000



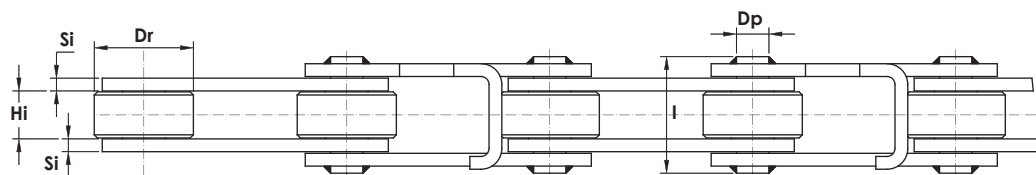
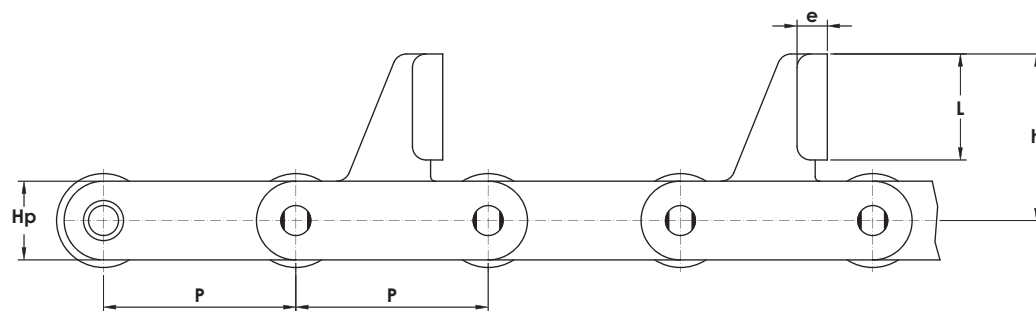
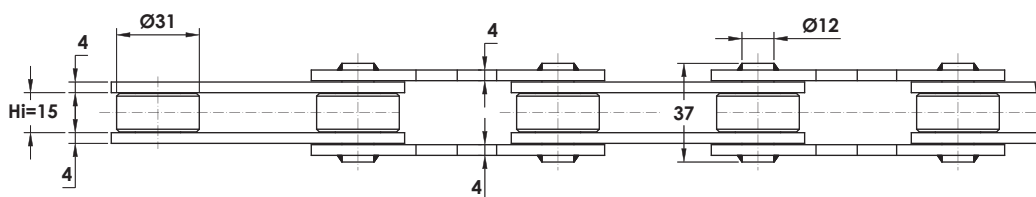
### IMPIANTI VERNICIATURA

PAINTING PLANTS

#### PAINTING LINES



Code: D0597  
Chain: P.75 x 15 x Ø31 Roller  
Breaking load = 13.730 daN

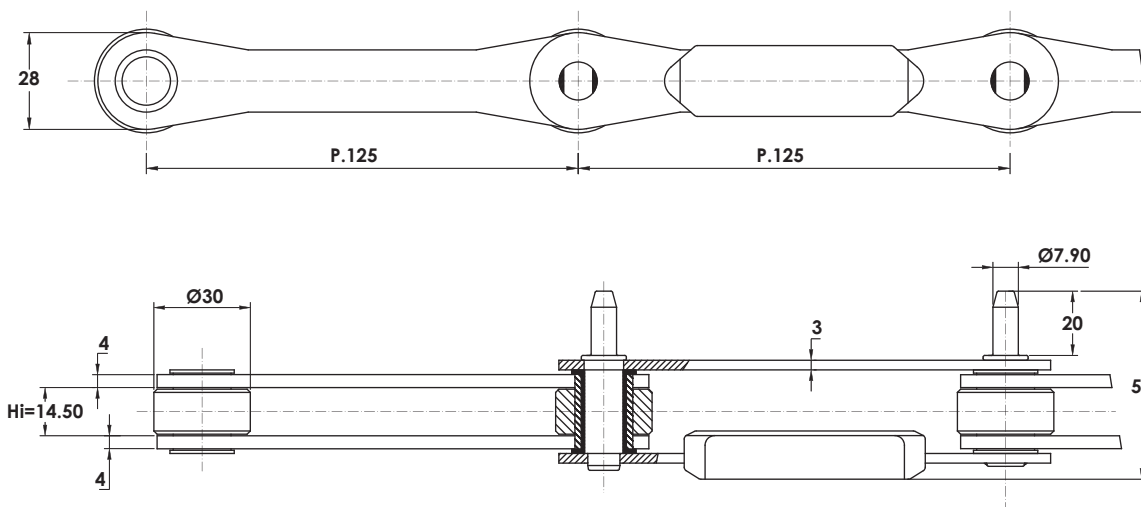


#### LINEE DI ASCIUGATURA - DRYING LINES

CODICE CATENA	passo p mm	Dimensioni									Carico di rottura Breaking Load daN Kg
		largh. interna min. Hi mm	diam. rullo Dr mm	altezza max piastra Hp mm	spess. piastre int./est. Si/S <sub>e</sub> mm	diam. max perno Dp mm	largh. perno ribad I mm	altezza aletta h mm	largh. aletta L mm	lungh. ricciolo e mm	
• D0366	63,50	15	31	26	4	10	37	55	35	10	9.810
• D0817	75	15	31	26	4	10	37	55	35	10	9.810

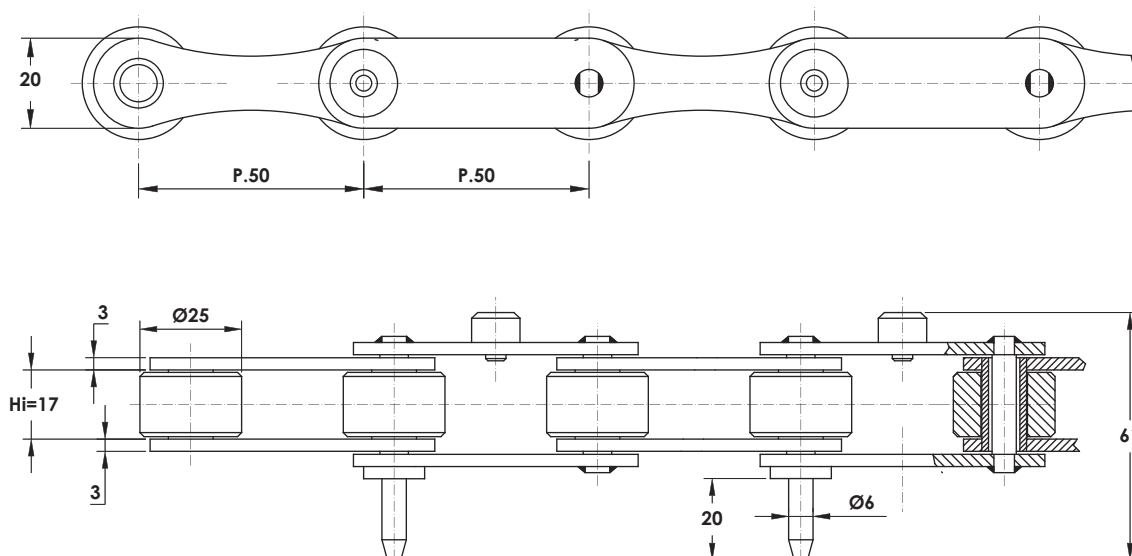
**TUNNEL REFRIGERAZIONE**  
FREEZING TUNNELS

**Stainless Steel Chain:**  
P.125 x 14.50 x Ø30 Roller  
Breaking load = 6.000 daN



Catena autolubrificante / Freelubricant Chain

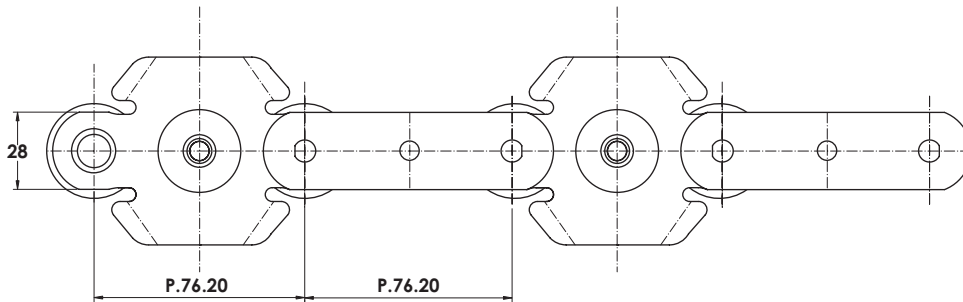
**Side Bow Chain:**  
P.50 x 17 x Ø25 Roller  
Breaking load = 2.650 daN



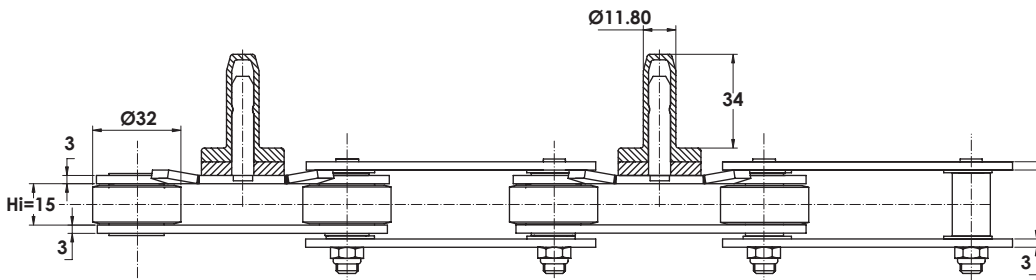
Disponibile anche in versione autolubrificante / Available also freelubricant Chain

**TUNNEL REFRIGERAZIONE**

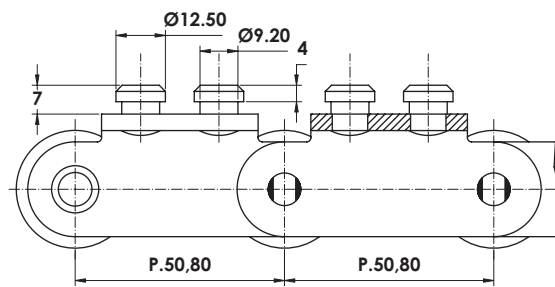
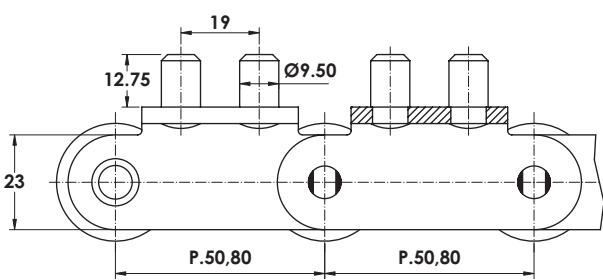
FREEZING TUNNELS



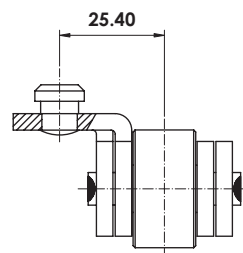
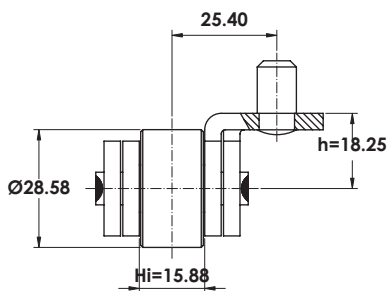
**Stainless Steel Side Bow Chain:**  
P.76.20 x 15 x Ø32 Roller  
Breaking load = 3.500 Kg



Catena autolubrificante / Freelubricant Chain

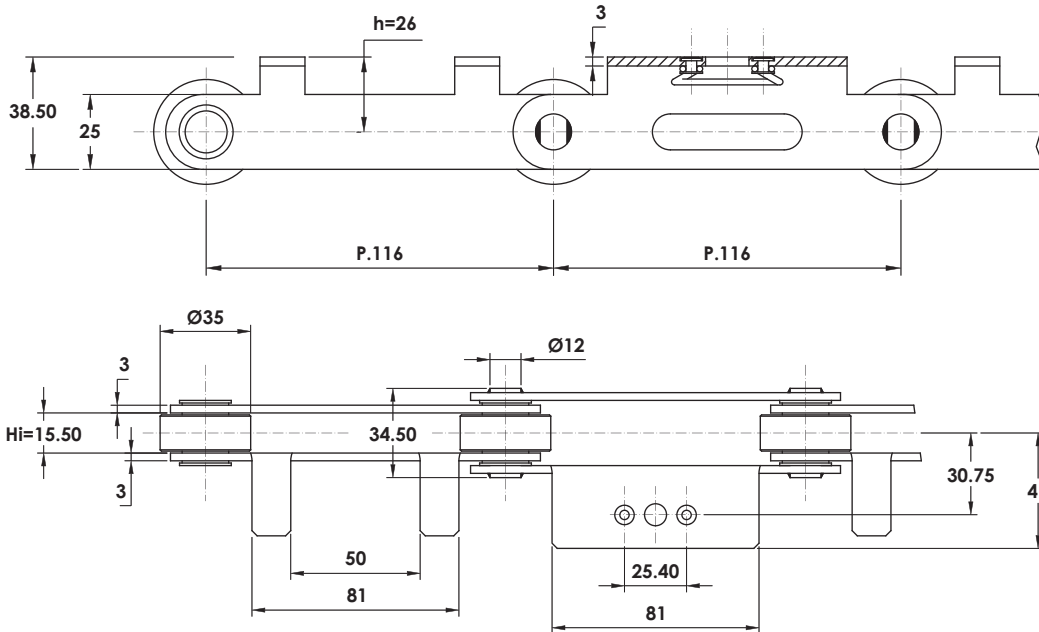


**Stainless Steel Chain:**  
C2082H  
P.50,80 x 15,88 x Ø28,58 Roller  
Breaking load = 3.500 Kg



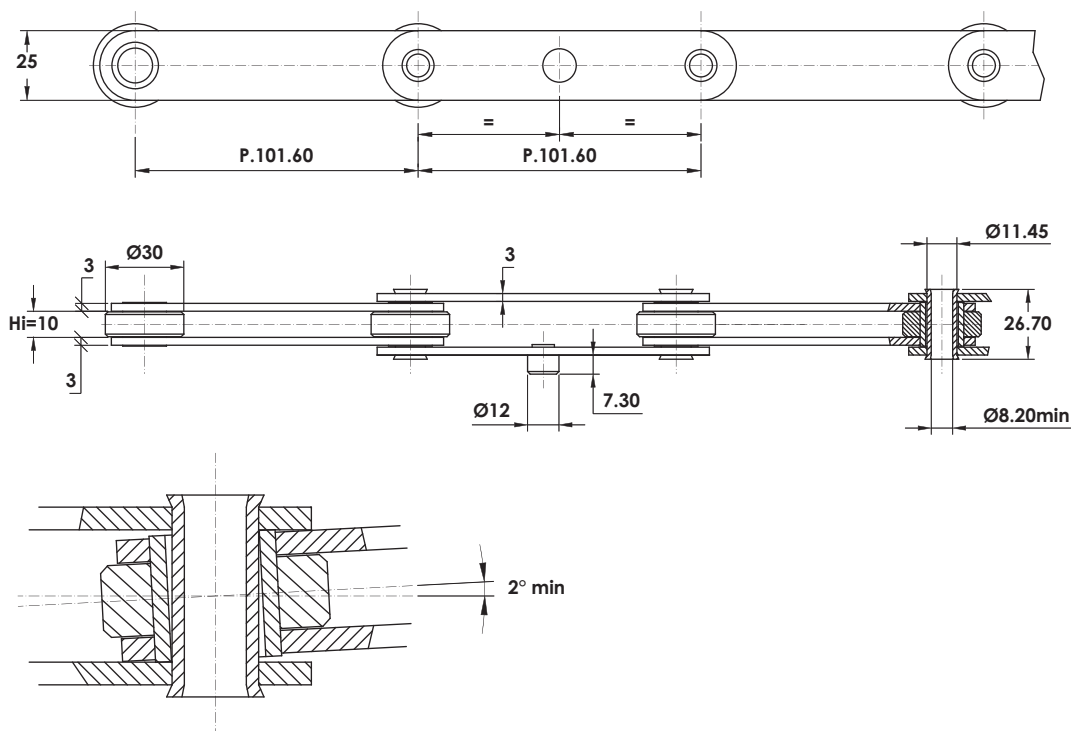
**TUNNEL REFRIGERAZIONE**

FREEZING TUNNELS



**Code: D1745**  
**Stainless Steel Chain:**  
P.116 x 15.50 x Ø35 Roller  
**Breaking load = 2.650 daN**

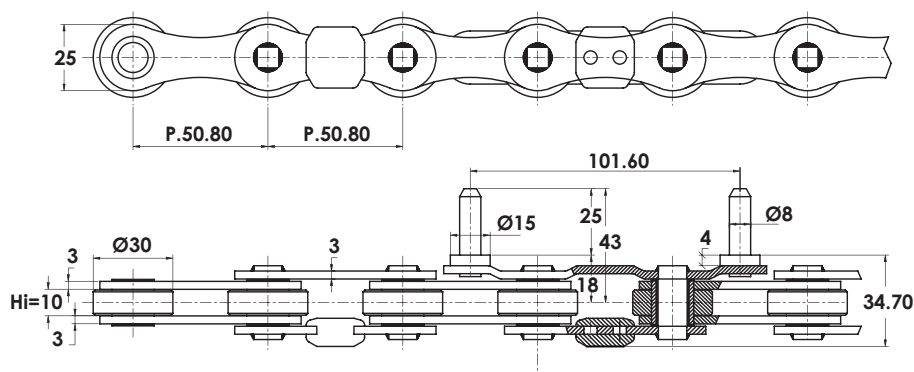
Catena autolubrificante / Freelubricant Chain



**Stainless Steel Side Bow Chain:**  
P.101.60 x 10 x Ø30 Roller  
**Breaking load = 2.500 daN**

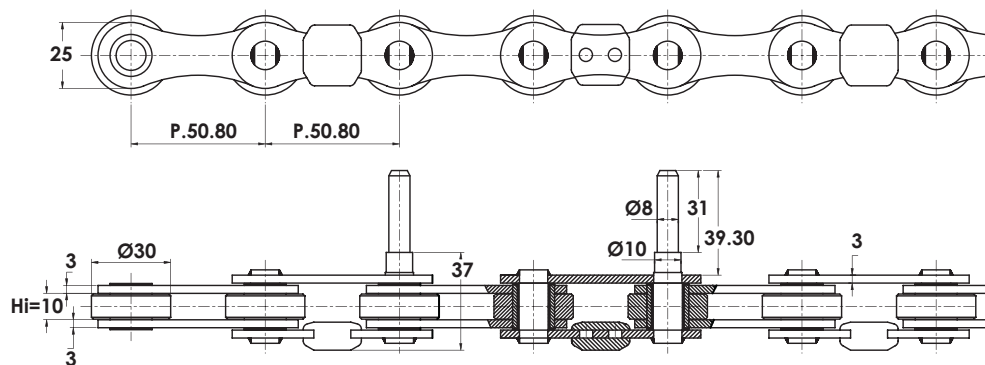
**TUNNEL REFRIGERAZIONE**  
FREEZING TUNNELS

**Stainless Steel Chain:**  
P.50.80 x 10 x Ø30 Roller  
**Breaking load = 3.200 daN**



Catena autolubrificante / Freelubricant Chain

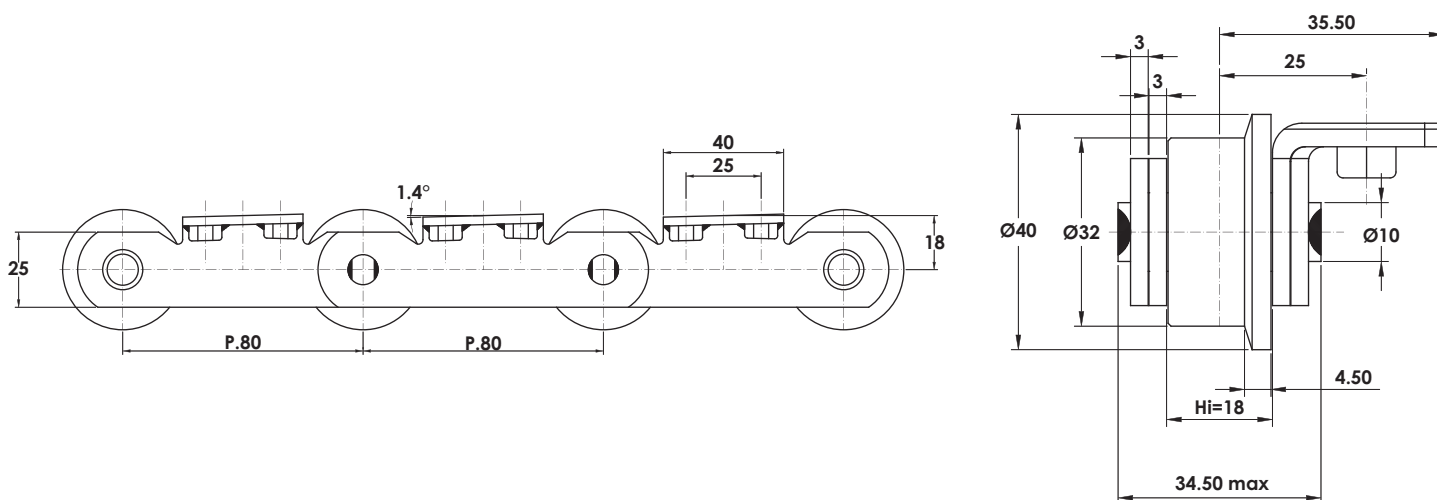
**Stainless Steel Chain:**  
P.50.80 x 10 x Ø30 Roller  
**Breaking load = 3.200 daN**



**TRASPORTO E TRATTAMENTO LEGNO**  
WOOD CONVEYOR PLANTS

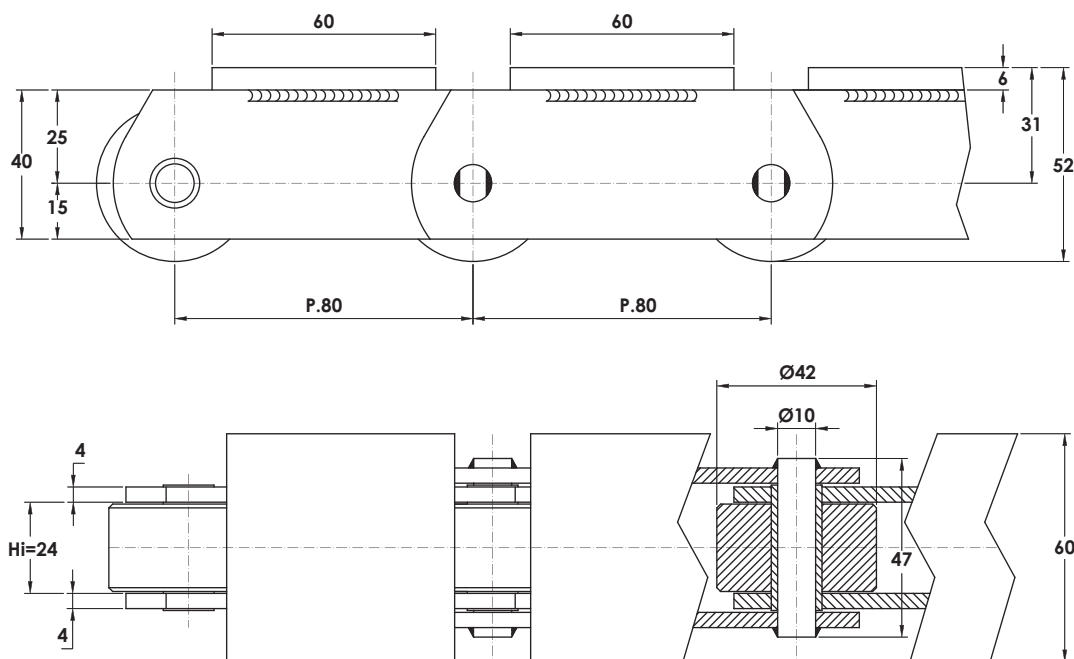
**IMPIANTO DI ESSICCAZIONE - DRYING LINES**

**Code:** D0950  
**Chain:** P.80 x 18 x Ø32/40Roller  
**Breaking load =** 4.000 daN



**IMPIANTO TRASPORTO LEGNO - WOOD CONVEYOR**

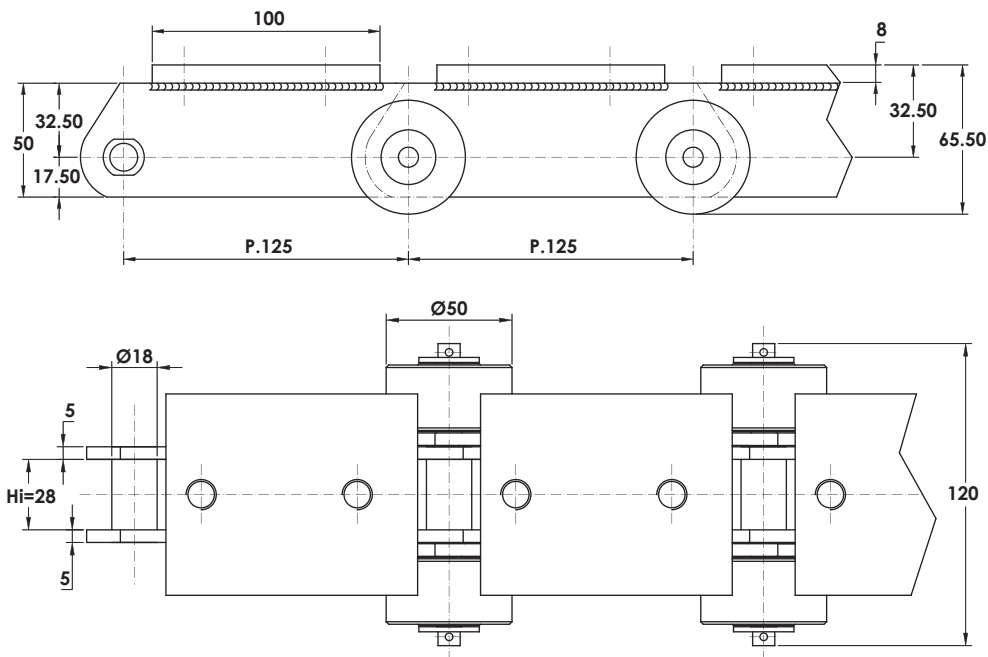
**Code:** D1732  
**Chain M56:** P.80 x 24 x Ø42Roller  
**Breaking load =** 5.600 daN



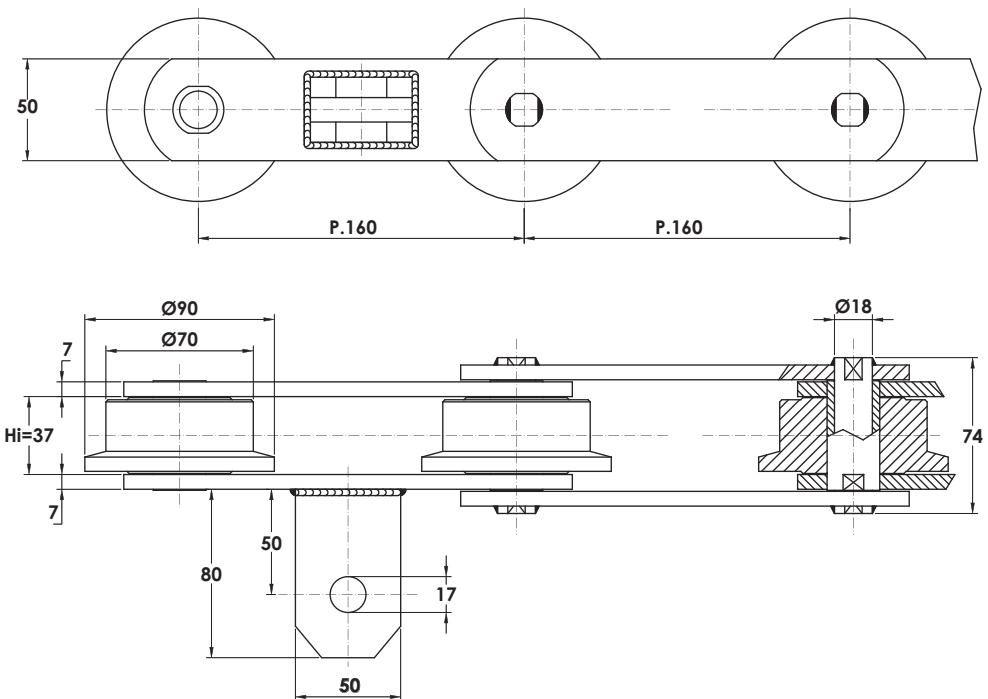


**TRASPORTO E TRATTAMENTO LEGNO**  
WOOD CONVEYOR PLANTS

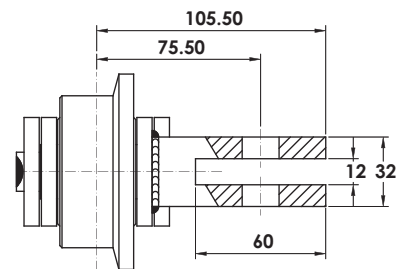
**IMPIANTO TRASPORTO LEGNO - WOOD CONVEYOR**



**Code:** D1984  
**Chain M80:** P.125 x 28 x Ø18Bush  
**Breaking load =** 8.000 daN



**Code:** D1835  
**Chain M160:**  
P.160 x 37 x Ø70/90Roller  
**Breaking load =** 16.000 daN



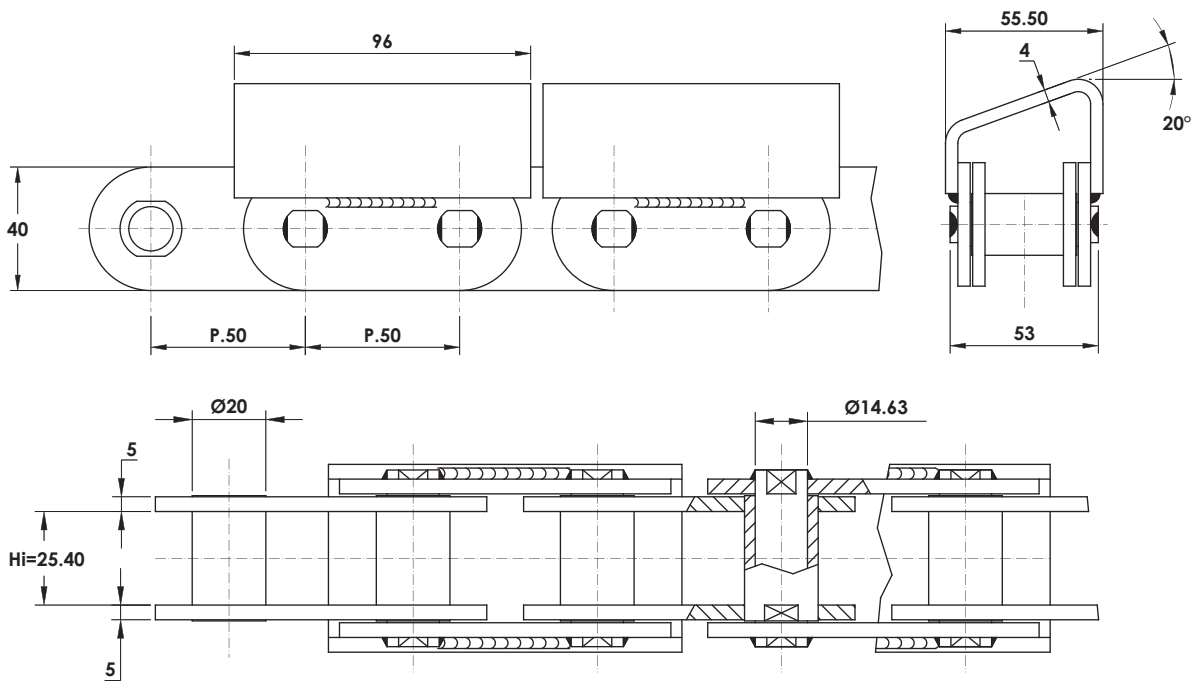


**TRASPORTO E TRATTAMENTO LEGNO**

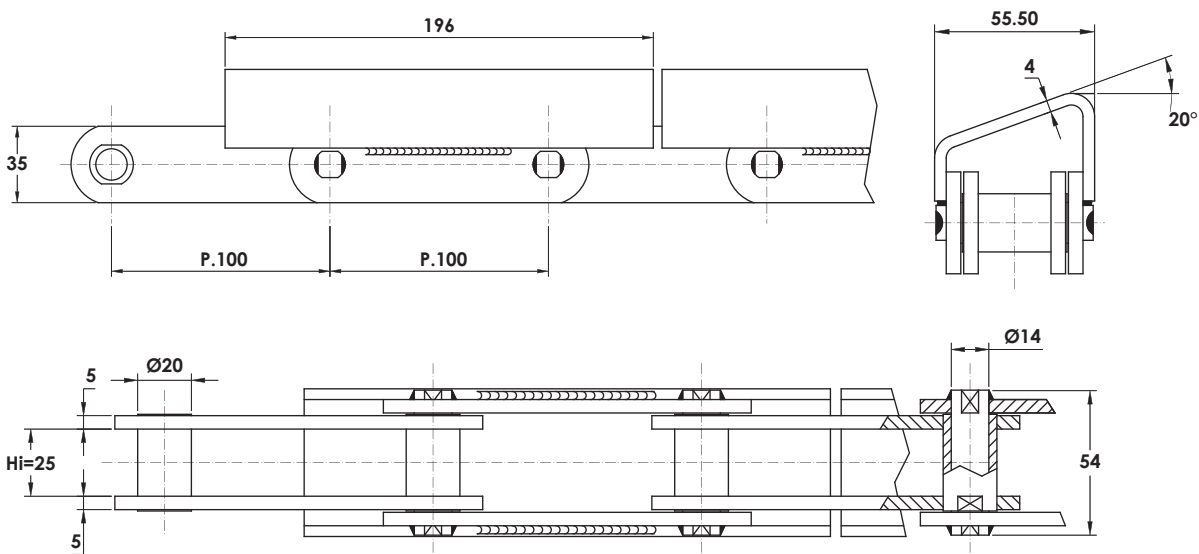
WOOD CONVEYOR PLANTS

**IMPIANTO TRASPORTO LEGNO - WOOD CONVEYOR**

**Chain : P.50 x 25.40 x Ø20Bush**  
**Breaking load = 15.000 daN**



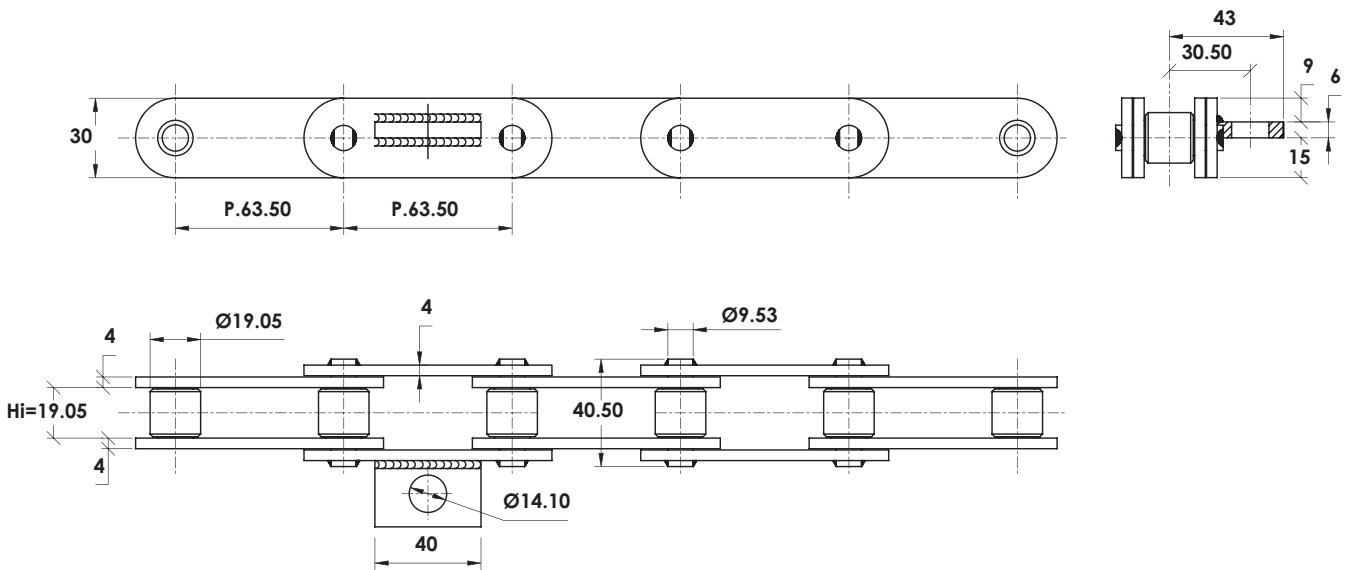
**Chain : P.100 x 25 x Ø20Bush**  
**Breaking load = 9.000 daN**



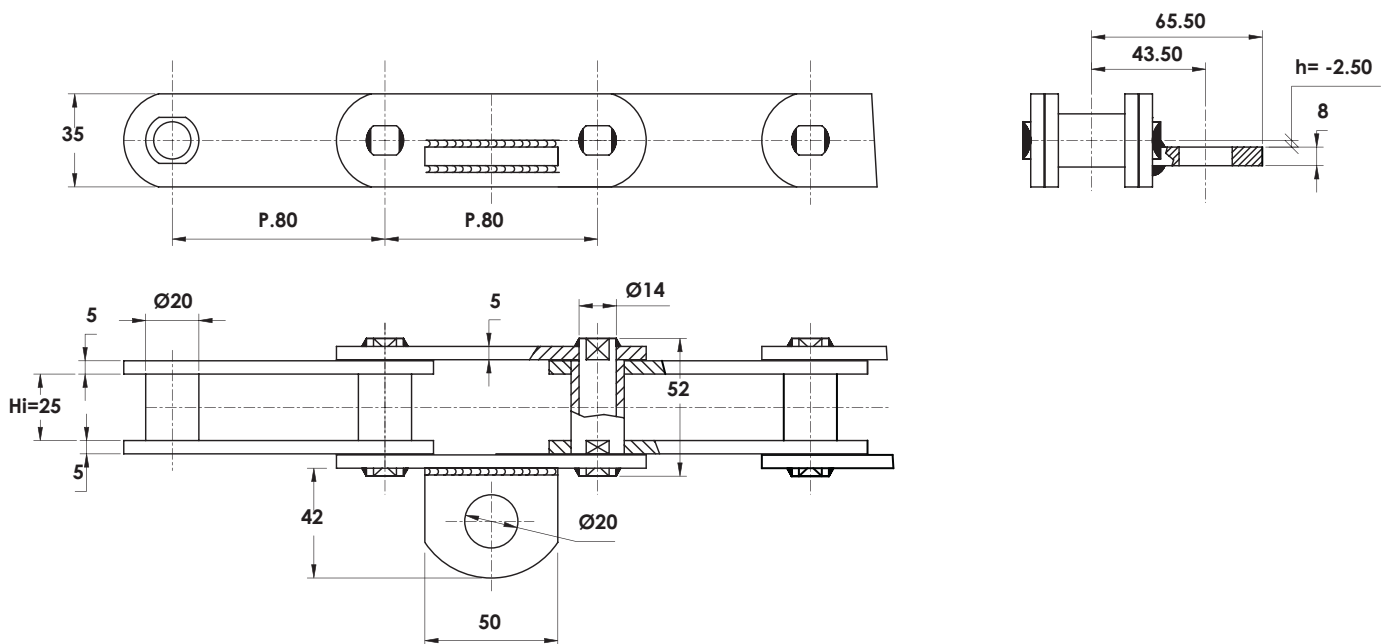
**ASFALTATRICI**

ASPHALT PAVING MACHINE

**Code:** D1741  
**Chain:** C2100H  
P.63.50 x 19.05 x Ø19.05 Roller  
**Breaking load = 10.900 daN**



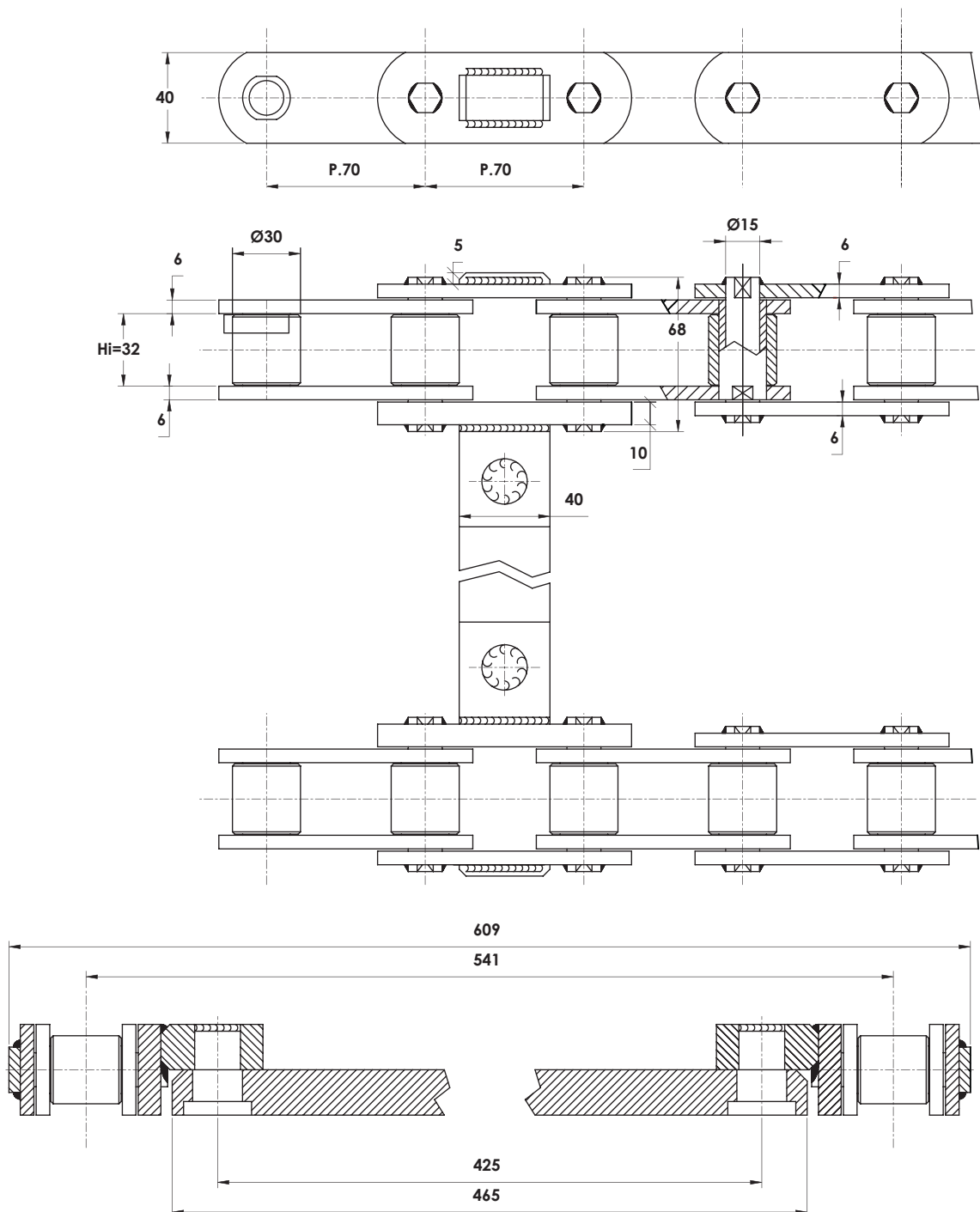
**Code:** D2222  
**Chain:** FV90  
P.80 x 25 x Ø20 Bush  
**Breaking load = 9.000 daN**



**ASFALTATRICI**

ASPHALT PAVING MACHINE

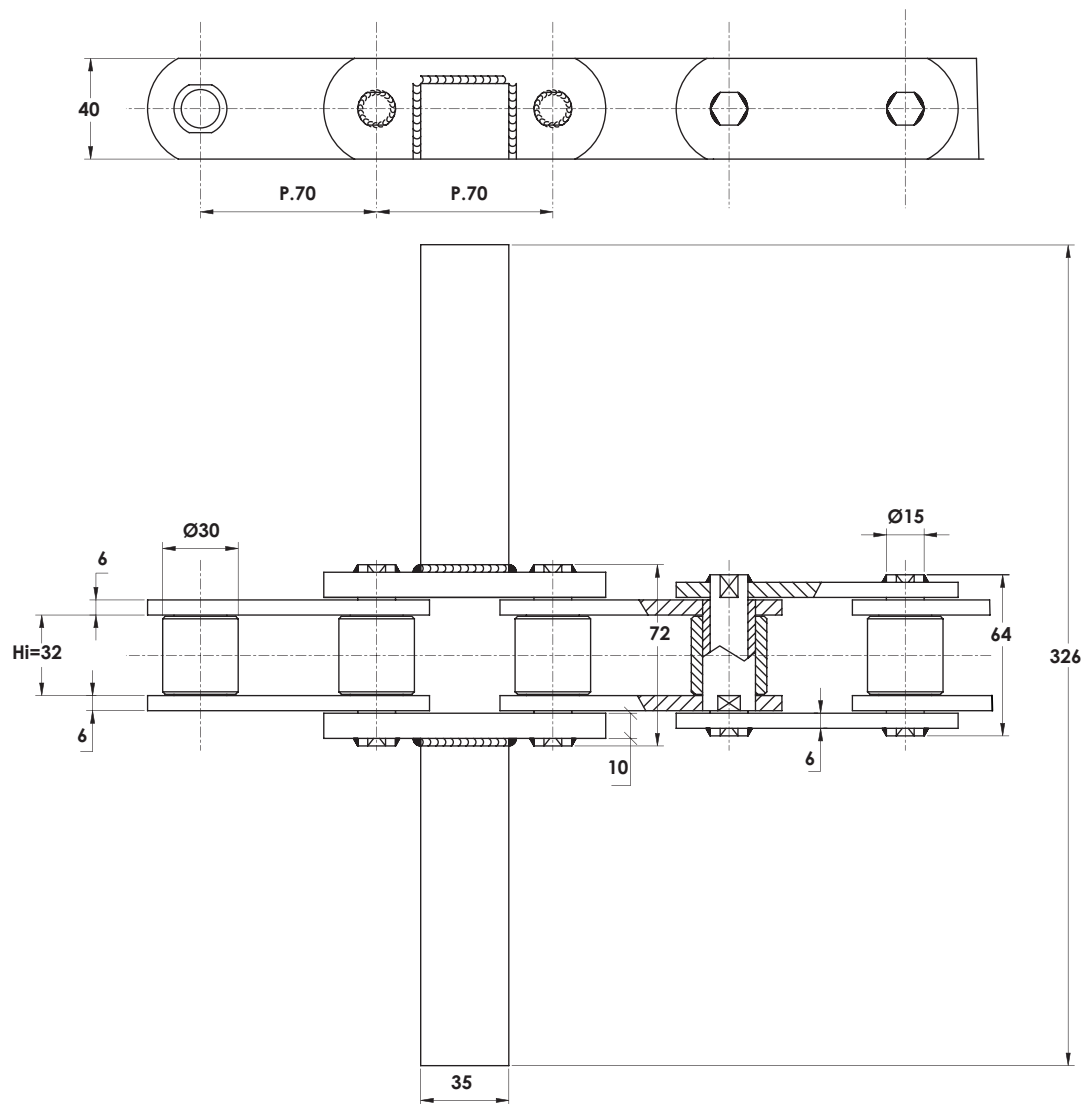
**Code:** D3432  
**Chain:** M112  
P.70 x 32 x Ø30 Roller  
**Breaking load = 11.200 daN**



**ASFALTATRICI**

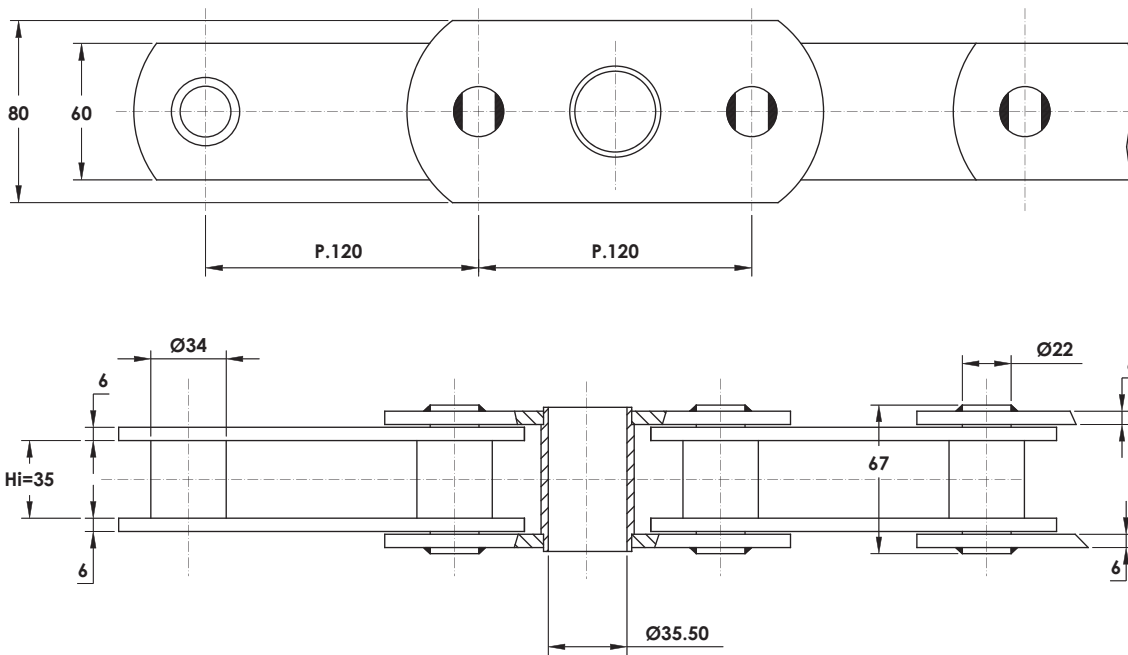
ASPHALT PAVING MACHINE

**Code:** D3445  
**Chain:** M112  
P.70 x 32 x Ø30 Roller  
**Breaking load = 11.200 daN**

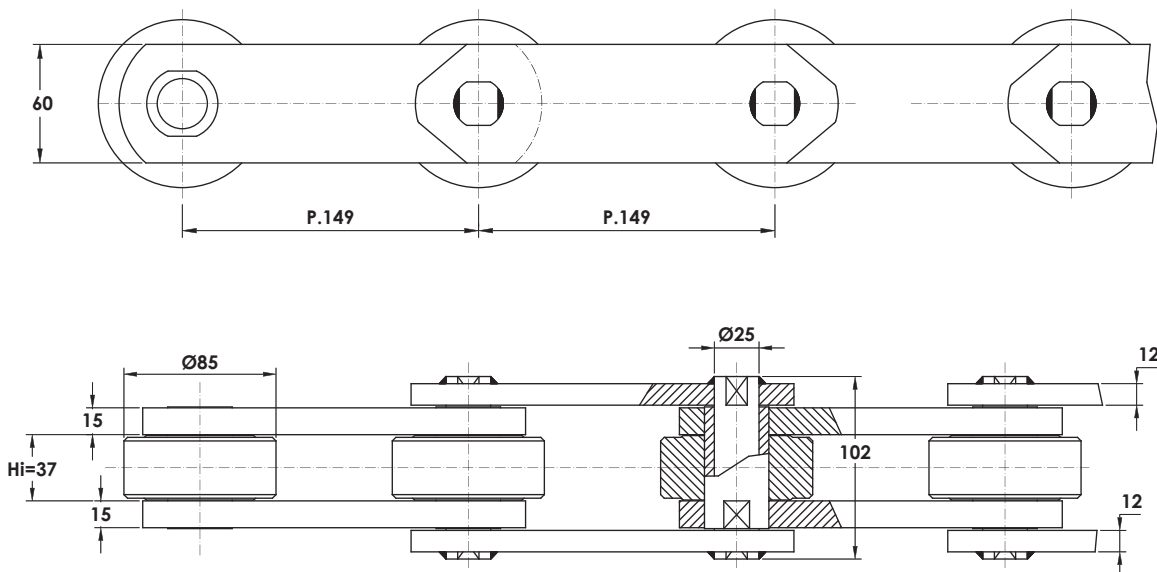


**IMPIANTI CERAMICHE E REFRATTARI**  
BRICK, TILE REFRACTORY INDUSTRY

**Chain : P.120 x 35 x Ø34 Bush**  
**Breaking load = 15.000 daN**  
**Breaking load = 26.500 daN**

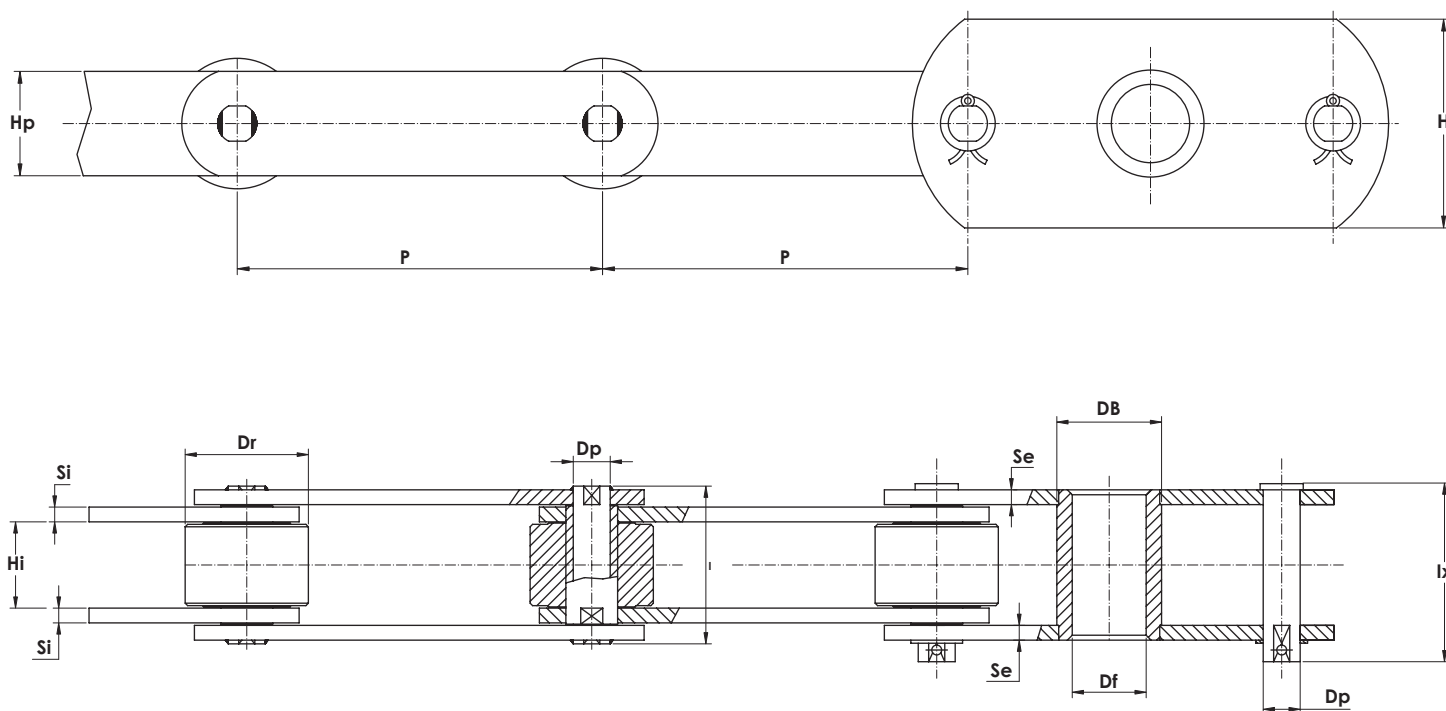


**Code: D1456**  
**Chain : P.149 x 37 x Ø85 Roller**  
**Breaking load = 43.150 daN**



## IMPIANTI CERAMICHE E REFRATTARI

BRICK, TILE REFRACTORY INDUSTRY

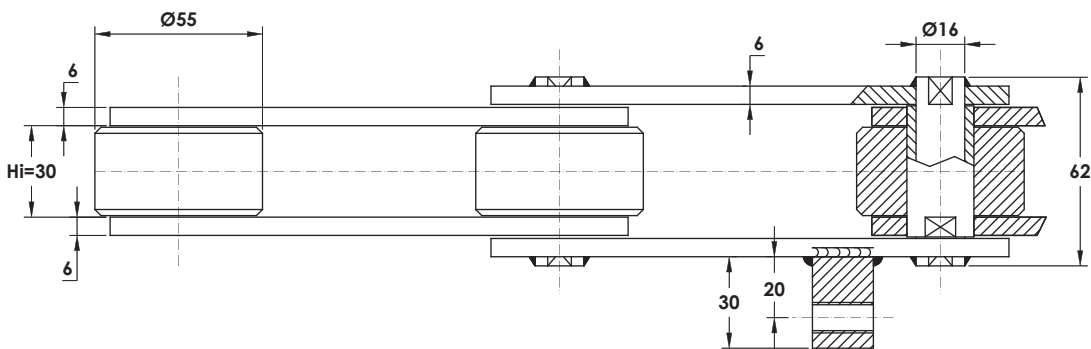
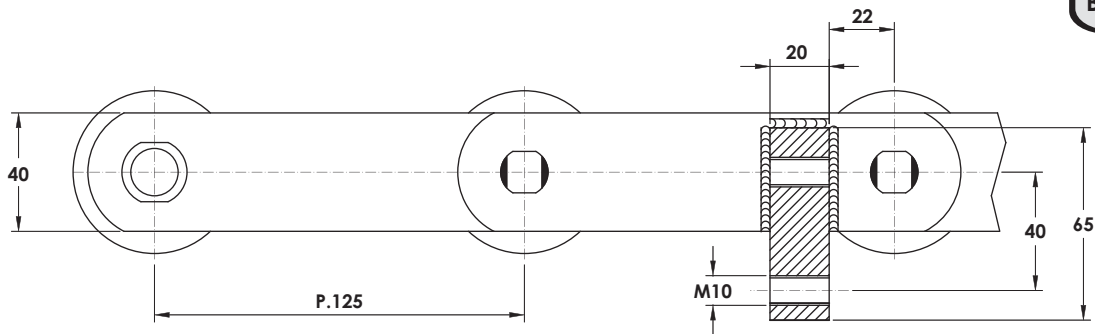


CODICE CATENA	Dimensioni													Carico di rottura Breaking Load Kg
	passo	largh. interna min.	diam. rullo	altezza max piastra	spess. piastre int.	spess. piastre est.	altezza piastrone	diam. est. perno	largh. perno ribad	diam. bussola centrale	diam. foro bussola centrale	ingombro max		
	p mm	Hi mm	Dr mm	Hp mm	S mm	S mm	H mm	Dp mm	I mm	Db mm	Df mm	Ix mm		
• <b>D0958</b>	280	45	85	70	12	10	130	24,85	98	75	60	120,50	60.000	
• <b>D1321</b>	280	70	100	80	12	12	160	30	128	85	60	145	65.000	
• <b>D1993</b>	280	55	80	70	10	10	120	26	104	65	52	116,50	65.000	
• <b>D2678</b>	300	70	100	90	12	12	180	32	130	90	60,30	145	85.000	
• <b>D1550</b>	300	78	100	90	15	15	180	44	148	100	70	166,50	96.000	

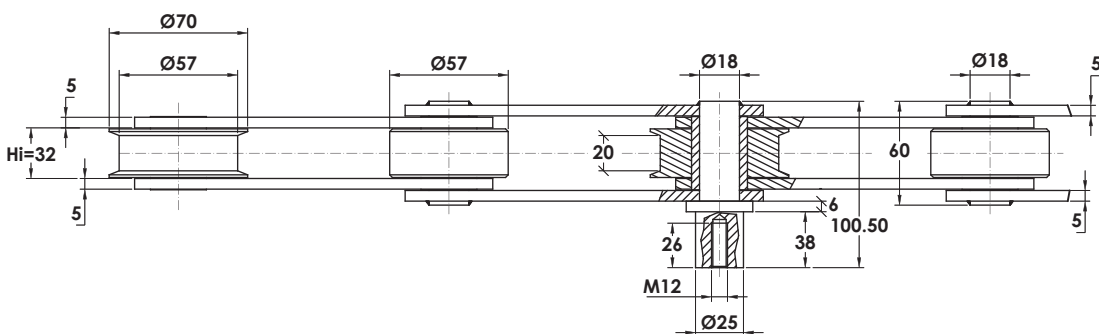
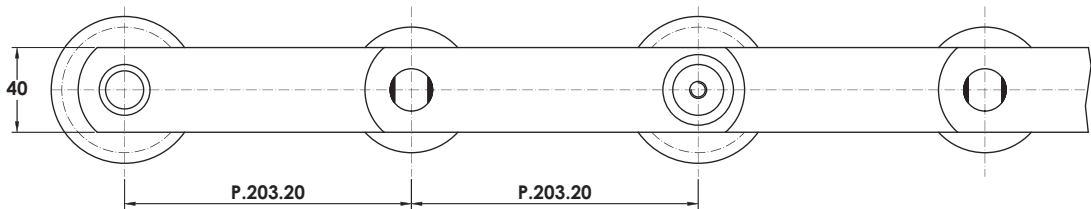


**ESECUZIONE SPECIALE**  
SPECIAL EXECUTION

Code : D1669  
Chain FV112 : P.125 x 30 x Ø55 Roller  
Breaking load = 11.200 daN



Code : D1557  
Chain : P.203.20 x 32 x Ø57/70 Roller  
Breaking load = 12.250 daN

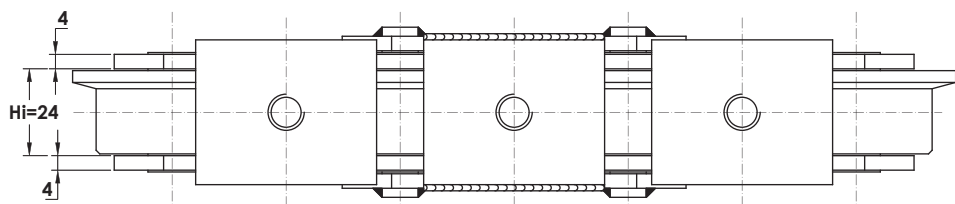
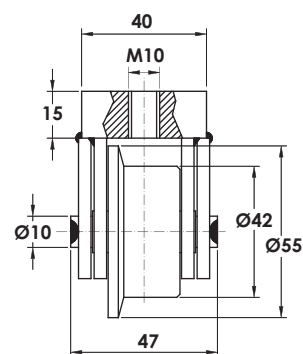
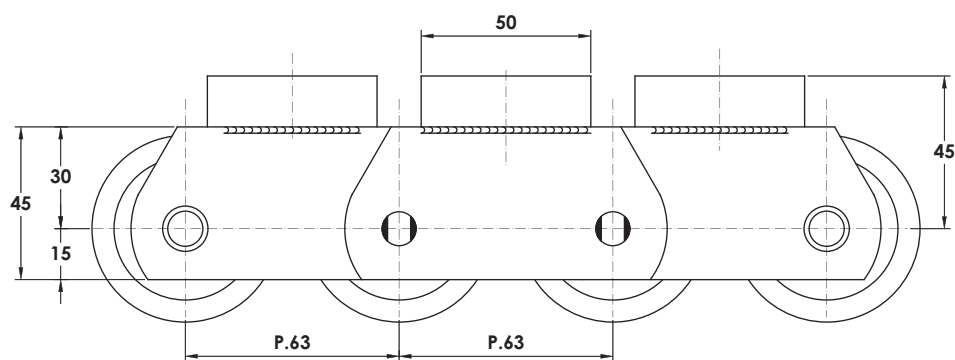




## ESECUZIONE SPECIALE

SPECIAL EXECUTION

Code : D1073  
 Chain M56 :  
 P.63 x 24 x Ø42/55 Roller  
 Breaking load = 5.600 daN



### TERMINI DI GARANZIA

La Rosa Catene Spa garantisce i suoi prodotti contro Difetti di Conformità presenti all'origine che vengano denunciati entro i 12 mesi dalla data di acquisto, comprovata da adeguata fattura. Per Garanzia si intende la sostituzione con prodotti nuovi o rigenerati in fabbrica che siano equivalenti per prestazioni ai nuovi prodotti o la riparazione gratuita delle parti componenti il prodotto che presentino Difetti di Conformità accertati e riscontrati dal nostro personale, imputabili ad una azione o omissione da parte della Rosa Catene Spa. Ogni altro indennizzo è escluso, né potranno essere reclamati danni diretti ed indiretti per temporaneo non utilizzo della merce acquistata. Il cliente, intestatario della fattura di vendita, decade dal diritto alla Garanzia ove non denunci il Difetto di Conformità entro il termine di due mesi dalla scoperta dello stesso.

La Garanzia decade se il prodotto viene danneggiato o reso difettoso in seguito ad uno stoccaggio o uso improprio o non corretto dello stesso e/o se le condizioni di utilizzo / manutenzione / lubrificazione non soddisfano quanto dettato dalla "buona tecnica" e dalle norme di riferimento e/o riportato nei documenti tecnici (cataloghi, disegni, o altro) della Rosa Catene Spa. L'esame dei difetti e delle loro cause sarà sempre effettuato dalla Rosa Catene Spa, anche avvalendosi di laboratori esterni, previa consegna presso la ns. sede produttiva del prodotto supposto non conforme.

Il cliente è tenuto a documentare in maniera inoppugnabile la provenienza del prodotto e le sue coordinate identificative che Rosa Catene Spa inserisce in ogni spedizione in maniera da consentire la tracciabilità del prodotto e dei suoi componenti all'interno del ciclo produttivo della Rosa Catene Spa.

Laddove tali dati non siano forniti si ha decadenza della validità della Garanzia.

In particolare per i prodotti con parti vulcanizzate in gomma si fa presente che la Rosa Catene Spa può garantire l'inalterazione delle caratteristiche fisico-meccaniche della miscela per circa 6 mesi dalla data di fornitura del prodotto in condizioni di corretto stoccaggio, quali :

- non esporre il prodotto alla luce solare diretta e/o alle intemperie.
- mantenere il prodotto ad una temperatura tra i 10°C e i 30°C.

Oltre tale periodo la miscela subisce un naturale decadimento dovuto al fenomeno naturale dell'invecchiamento, più o meno rapido a seconda delle condizioni ambientali e/o di lavoro.

### WARRANTY TERMS

Rosa Catene Spa guarantees their products against conformity defects present at the beginning if notified within 12 months from the purchasing date and in possession of their respective invoice.

**PARTI STACCATE PER CATENE A RULLI**  
LOOSE PARTS FOR ROLLER CHAINS

N°40

semplice  
single



multipla  
multiple

**MAGLIA INTERNA**  
INNER LINK

N°35

semplice  
single

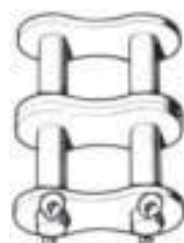


multipla  
multiple

**MAGLIA ESTERNA**  
OUTER LINK

N°21

semplice  
single



multipla  
multiple

**GIUNTO CON COPIGLIE**  
COTTER CONNECTING LINK

N°20

semplice  
single



multipla  
multiple

**GIUNTO CON MOLLETTA**  
SPRING CLIP CONNECTING LINK

N°26

semplice  
single



perno giunto  
connecting pin

**GIUNTO CON DADO PER PERNI FORATI**  
NUT CONNECTING LINK FOR HOLLOW PINS

N°27

semplice  
single



perno giunto  
connecting pin

**GIUNTO CON SEEGER PER PERNI FORATI**  
SEEGER CONNECTING LINK FOR HOLLOW PINS

N°30

semplice  
single



multipla  
multiple

**MAGLIA FALSA DOPPIA**  
OFFSET SECTION

N°31

semplice  
single



multipla  
multiple

**MAGLIA FALSA CON COPIGLIE**  
ROLLPIN OFFSET LINK

N°22

**PERNO GIUNTO**  
CONNECTING PIN



N°23

**COPIGLIA**  
COTTER



N°25

**MOLLETTA**  
SPRING CLIP



N°28

**DADO**  
NUT



N°29

**SEEGER**  
SEEGER



La Società **ROSA CATENE** spa ed **EUROCATENE** sas sono presenti con i loro prodotti anche nei seguenti settori:

Richiedete alla nostra sede i cataloghi di Vostro interesse

AGRICOLTURA



TRASPORTO GOMMA



CATENE PER ACCUMULO



TRASPORTO LEGGERO



CATENE RASCHIANTI



TRASPORTO PESANTE



TRASMISSIONE



TRAZIONE



**ROSA**  
**EURO**  
**CATENE**

**FABBRICA CATENE AGRICOLE E INDUSTRIALI**  
**INDUSTRIAL AND AGRICULTURAL CHAIN FACTORY**

Via S. Rocco, 5/B - 23801 **CALOLZIOCORTE** (LC) - Italy  
Tel. 0039.0341.630.294 - Telefax Italy 0039.0341.631.139 - Telefax Foreign 0039.0341.645.789  
[www.rosacatene.com](http://www.rosacatene.com) - e-mail: [rosa@rosacatene.com](mailto:rosa@rosacatene.com)